

Sotheby's EST. 1744



FINE JEWELS

NEW YORK 7 DECEMBER 2017



FRONT COVER: LOT 398
BACK COVER: LOT 613
THIS PAGE: LOTS 506 & 509

FINE
JEWELS





THIS PAGE
LOTS 603 & 602





THIS PAGE
LOT 536

FINE JEWELS

AUCTION IN NEW YORK
7 DECEMBER 2017
SALE N09695

SESSION ONE: 10:00 AM
SESSION TWO: 2:00 PM

Certificates of Authenticity Various manufacturers may not issue certificates of authenticity upon request. Sotheby's is not under an obligation to furnish the purchaser with a certificate of authenticity from the manufacturer at any time. Unless the requirements for a rescission of the sale under the Terms of Guarantee are satisfied, the failure of a manufacturer to issue a certificate will not constitute grounds to rescind the sale.

Gemological Certificates and Reports References in the catalogue descriptions to certificates or reports issued by gemological laboratories are provided only for the information of bidders, and Sotheby's does not guarantee and accepts no responsibility for the accuracy, terms or information contained in such certificates or reports. Please also note that laboratories may differ in their assessment of a gemstone (including its origin and presence, type and extent of treatments) and their certificates or reports may contain different results.

EXHIBITION

Thursday 30 November
10 am-5 pm

Friday 1 December
10 am-5 pm

Saturday 2 December
10 am-5 pm

Sunday 3 December
1 pm-5 pm

Monday 4 December
10 am-5 pm

Tuesday 5 December
10 am-5 pm

Wednesday 6 December
10 am-5 pm

Thursday 7 December (Session II only)
10 am-12 pm

1334 York Avenue
New York, NY 10021
+1 212 606 7000
sothebys.com
FOLLOW US @SOTHEBYS
#SOTHEBYSJEWELS

SPECIALISTS FOR THIS SALE



David Bennett
*Worldwide Chairman
International Jewelry Division*
david.bennett@sothebys.com



Gary Schuler
Chairman
gary.schuler@sothebys.com



Carol Elkins
Senior Specialist
carol.elkins@sothebys.com



Frank Everett
Sales Director
frank.everett@sothebys.com



Catharine Becket
Senior Specialist
catharine.becket@sothebys.com



Esther Tadjiev
Sales Development
esther.tadjiev@sothebys.com



Robin Wright
Senior Specialist
robin.wright@sothebys.com



Alexander Eblen
Senior Specialist
alexander.eblen@sothebys.com



Quig Bruning
quig.bruning@sothebys.com



Kendall Reed
kendall.reed@sothebys.com



Nikita Manilal
nikita.manilal@sothebys.com



Yang Bu
Business Director
yang.bu@sothebys.com



Nicholas Clark
Business Manager
nicholas.clark@sothebys.com



Mallory Landers
Project Manager
mallory.landere@sothebys.com



Vivian Chen
Associate Cataloguer
vivian.chen@sothebys.com



Lexy Damianos
Associate Cataloguer
lexy.damianos@sothebys.com

SPECIALISTS AND AUCTION ENQUIRIES

For further information on lots in this auction please contact any of the specialists listed below.

SALE NUMBER

N09694 "SPARKLE"

BIDS DEPARTMENT

+1 212 606 7414

FAX +1 212 606 7016

bids.newyork@sothebys.com

Telephone bid requests should be received 24 hours prior to the sale. This service is offered for lots with a low estimate of \$5,000 and above.

PRIVATE CLIENT GROUP

Brad Bentoff

Carolyn Floersheimer

Olivia de Grelle

Geraldine Nager

Alejandra Rossetti

David Rothschild

Lily Snyder

+1 212 894 1796

ASIA CLIENT LIAISON

Yin Zhao

+1 212 894 1685

yin.zhao@sothebys.com

CONSULTANT

Lexi Yost

HEAD OF FINE JEWELS SALES

Kendall Reed

kendall.reed@sothebys.com

+1 212 606 7392

FAX +1 212 606 7014

SALE ADMINISTRATOR

Orly Brooker

orly.brooker@sothebys.com

+1 212 894 1507

FAX +1 212 606 7014

POST SALE SERVICES

Ashlyn Michalakis

Post Sale Manager

ashlyn.michalakis@sothebys.com

+1 212 606 7444

PAYMENT, DELIVERY AND COLLECTION

+1 212 606 7444

FAX +1 212 606 7043

uspostsaleservices@sothebys.com

CATALOGUE PRICE

\$45 at the gallery

FOR SUBSCRIPTIONS CALL

+1 212 606 7000 USA

+44 (0)20 7293 5000

for UK & Europe

CONDITION REPORTS

Sotheby's Jewelry department is pleased to offer to potential purchasers Condition Reports of the lots in this catalogue.

A Condition Report is an opinion describing in more depth the lot with regards to, but not limited to, the general condition, quality of stones and/or other relevant information.

Please contact:

Tori Porter

tori.porter@sothebys.com

+1 212 894 1506

DECORATIVE PHOTOGRAPHY

SquareMoose

New York

+1 212 643 2505



CONTENTS

5	AUCTION INFORMATION
7	SPECIALISTS & AUCTION ENQUIRIES
10	SESSION ONE: LOTS 317–472
86	SESSION TWO: LOTS 473–615
153	CONDITIONS OF SALE
154	TERMS OF GUARANTEE
155	ADDITIONAL TERMS AND CONDITIONS FOR LIVE ONLINE BIDDING BUYING AT AUCTION
158	SELLING AT AUCTION
159	SOTHEBY'S SERVICES INFORMATION ON SALES AND USE TAX IMPORTANT NOTICES
161	RING SIZE CHART
162	DIAMOND CLARITY GRADING DIAMOND COLOR GRADING GLOSSARY OF TERMS
163	INDEX OF DIAMONDS
164	COLORED STONE LIST
165	ABSENTEE BID FORM
167	INTERNATIONAL DEPARTMENTS
168	INDEX OF MAKERS



THIS PAGE
LOTS 481 & 482

SESSION ONE

NEW YORK
THURSDAY
7 DECEMBER 2017
10AM

LOTS 317-472

Please note these lots are
not shown in actual size



PROPERTY FROM A DISTINGUISHED FAMILY COLLECTION

LOTS 317–344

THIS COLLECTION CONTINUES WITH LOTS 196-210 IN THE MAGNIFICENT JEWELS SALE IN NEW YORK ON DECEMBER 5, 2017



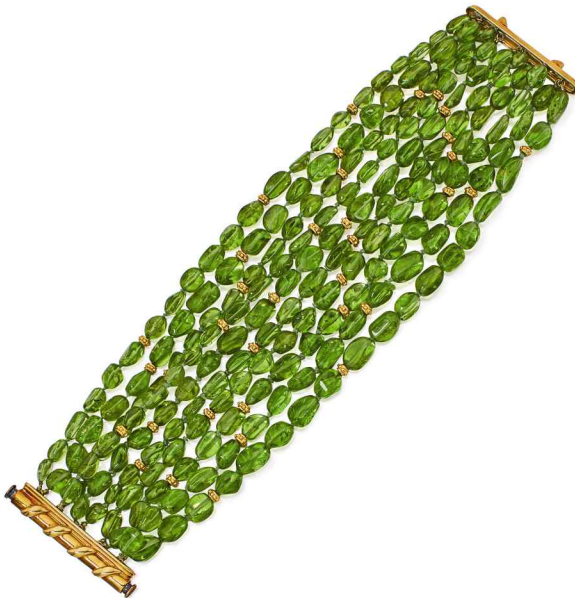
317

PROPERTY FROM A DISTINGUISHED FAMILY COLLECTION

Pair of Gold Earclips, Italy

Of fluted design, gross weight approximately 14 dwts, with *Italian registry marks*.

US\$ 500-700



318

PROPERTY FROM A DISTINGUISHED FAMILY COLLECTION

Peridot Bracelet, Verdura

Composed of 10 rows of tumbled peridot beads interspersed with gold rondels, *length 7¾ inches, unsigned, with Italian assay and registry marks.*

US\$ 5,000-7,000

319

PROPERTY FROM A DISTINGUISHED FAMILY
COLLECTION

Peridot, Aquamarine, Rhodocrosite, and Diamond Necklace

Composed of two rows of peridot beads
suspending a fringe of faceted aquamarine and
polished rhodocrosite beads, interspersed with
gold and peridot rondelles, the fluted gold clasp
accented with round diamonds, *length 16½
inches.*

US\$ 4,000-6,000



320

PROPERTY FROM A DISTINGUISHED FAMILY
COLLECTION

Gold Bracelet, Italy

Composed of braided links, gross weight
approximately 69 dwts, *length 8½ inches,*
with Italian assay and registry marks.

US\$ 2,500-3,500





321

PROPERTY FROM A DISTINGUISHED FAMILY COLLECTION

Pair of Gold and Coral Earclips and Ring, Italy

The ring set with a coral cabochon within a multi-row surround of gold ropetwist, size 6½, signed ACF, with Italian assay and registry marks; the earclips similarly-set with coral cabochons, signed ACF, with Italian assay and registry marks.

Please note this property cannot be shipped internationally due to endangered species materials.

© US\$ 700-900



322

PROPERTY FROM A DISTINGUISHED FAMILY COLLECTION

Diamond and Ruby Clip-Brooch, France

Designed as a textured gold bird, the eye set with a round ruby and four single-cut diamonds, gross weight approximately 8 dwts, with French export marks.

US\$ 400-600



323

PROPERTY FROM A DISTINGUISHED FAMILY COLLECTION

Pair of Aventurine Quartz Earclips

Each composed of carved and fluted aventurine quartz decorated with gold ribs.

US\$ 2,000-3,000

324

PROPERTY FROM A DISTINGUISHED FAMILY
COLLECTION

Enamel, Diamond and Ruby Pendant- Watch

Designed as a beetle applied with blue and black enamel wings, accented with rose-cut diamonds and two cabochon ruby eyes, the wings open to reveal a circular white enamel dial with painted blue and red Arabic numeral indicators and gilt outer dot minute divisions, mechanical movement, *the chain of later addition.*

US\$ 5,000-7,000



325

PROPERTY FROM A DISTINGUISHED FAMILY
COLLECTION

Gold and Sapphire Brooch, Tiffany & Co.

Designed as a flower, the center set with round sapphires, gross weight approximately 12 dwts, *signed Tiffany & Co. Italy.*

US\$ 600-800



326

PROPERTY FROM A DISTINGUISHED FAMILY
COLLECTION

Ruby, Sapphire, Emerald and Diamond Brooch

Designed as two mushrooms, one set with round rubies and the other with round sapphires, accented with round diamonds and emeralds.

US\$ 1,500-2,000





327

PROPERTY FROM A DISTINGUISHED FAMILY
COLLECTION

Pair of Gold Earclips and Ring

The earclips designed as gold ropetwist ellipses, *signed Harpo's*; the ring of similar design, *with Italian registry mark*; total gross weight approximately 19 dwts.

US\$ 800-1,200



328

PROPERTY FROM A DISTINGUISHED FAMILY
COLLECTION

**Pair of Gold 'Turbo Shell' Earclips,
Verdura**

Designed as textured gold turbo seashells, gross weight approximately 15 dwts, *signed Verdura*.
With signed box.

US\$ 700-900

329

PROPERTY FROM A DISTINGUISHED FAMILY
COLLECTION

Cocholong Necklace, Verdura

Composed of five strands of elongated cocholong
beads interspersed with gold rondelles, *length 20
inches, signed Verdura, with workshop mark.*

US\$ 2,000-3,000



330

PROPERTY FROM A DISTINGUISHED FAMILY
COLLECTION

Gold, Rock Crystal and Black Spinel 'Fleuron' Bangle-Bracelet, Verdura

Composed of twisted gold set at the terminals
with a faceted rock crystal and black spinel,
internal circumference 6 inches, signed Verdura.

US\$ 2,000-3,000



331

PROPERTY FROM A DISTINGUISHED FAMILY
COLLECTION

Colored Stone Ring, Belperron

Of crossover design, set with variously-cut amethysts, pink sapphires and purple sapphires, size 7, signed *BELPERRON*, with French assay mark and partial workshop mark; circa 2000.

US\$ 5,000-7,000



332

PROPERTY FROM A DISTINGUISHED FAMILY
COLLECTION

Gold 'Curb-Link' Bracelet-Watch, Verdura

Composed of gold curb links, the round dial set with Roman numeral indicators, quartz movement, gross weight approximately 61 dwts, length 7½ inches, the dial signed *Verdura*.

US\$ 4,000-6,000



333

PROPERTY FROM A DISTINGUISHED FAMILY
COLLECTION

Smoky Quartz Necklace, Verdura

Composed of 15 strands of oval-shaped faceted smoky quartz beads interspersed with textured gold boules, terminating in a fluted barrel clasp, *length 17 inches, signed Verdura, with workshop mark.* With signed box.

US\$ 5,000-7,000



334

PROPERTY FROM A DISTINGUISHED FAMILY
COLLECTION

Pair of Cultured Pearl and Diamond Earclips, France

The woven gold designs set with 14 cultured pearls, measuring approximately 8.5 to 7.0 mm, each with a bezel-set round diamond, *with French workshop and assay marks.*

US\$ 2,500-3,500





335

PROPERTY FROM A DISTINGUISHED FAMILY COLLECTION

Suite of Gold and Diamond Jewelry, Krypell

The necklace set with alternating links of polished gold and rows of baguette diamonds, *length 16 inches, signed Krypell*; the bracelet similarly set, *length 7½ inches, signed Krypell*; the earclips similarly set, total gross weight approximately 343 dwts. With signed box.

US\$ 30,000-50,000



336

PROPERTY FROM A DISTINGUISHED FAMILY COLLECTION

Platinum and Diamond Wristwatch, Tiffany & Co.

The tonneau-shaped silvered dial with painted black Arabic numeral indicators, blued steel Breguet hands and outer minute track, completed by a flexible bracelet set with variously-cut diamonds, manual movement, *length 6½ inches, movement by CH Meylan, signed Tiffany & Co; circa 1920.*

US\$ 8,000-12,000

337

PROPERTY FROM A DISTINGUISHED FAMILY
COLLECTION

Diamond Clip-Brooch, France

The entwined flowers set with round, baguette and marquise-shaped diamonds, with polished gold accents.

US\$ 10,000-15,000



338

PROPERTY FROM A DISTINGUISHED FAMILY
COLLECTION

Diamond Wristwatch, Omega

The rectangular silvered dial applied with faceted dart indicators and Dauphine hands framed by round diamonds, completed by a flexible bracelet set with single-cut diamonds, mechanical movement, *length 6½ inches, dial signed Omega and Swiss.*

US\$ 1,000-1,500



339

PROPERTY FROM A DISTINGUISHED FAMILY
COLLECTION

Pink Sapphire and Diamond Ring, Pasquale Bruni

The wide band set with round pink sapphires in a floral design, surrounded by round diamonds, *size 7, signed Pasquale Bruni, with Italian assay and registry marks, one diamond missing.*

US\$ 1,200-1,500





340

PROPERTY FROM A DISTINGUISHED FAMILY COLLECTION

Gold Necklace, Italy

Composed of modified brick links, gross weight approximately 74 dwts, *length 16 inches.*

US\$ 3,000-5,000

341

PROPERTY FROM A DISTINGUISHED FAMILY COLLECTION

Gold Watch, Verdura

Composed of a flexible gold bracelet, the cream dial with black Roman numeral indicators and black steel Feuille hands, gross weight approximately 21 dwts, quartz movement, *internal circumference 6¾ inches, dial signed Verdura.*

US\$ 2,500-3,500



342

PROPERTY FROM A DISTINGUISHED FAMILY
COLLECTION

**Pair of Enamel and Diamond Earclips,
Van Cleef & Arpels, Italy**

The bombé half-hoops decorated with round
diamonds, within textured grounds applied
with dark green enamel, *signed VCA, numbered
3V290-6.*

US\$ 2,000-3,000



343

PROPERTY FROM A DISTINGUISHED FAMILY
COLLECTION

**Pair of Gold and Mabé Pearl 'Caged'
Earclips, Verdura**

Each pearl embellished with crossover gold
elements, *signed Verdura.*

US\$ 2,500-3,500



344

PROPERTY FROM A DISTINGUISHED FAMILY
COLLECTION

**Pair of Carved Coral and Diamond
Earclips**

Each designed as a shell accented with gold
ropetwist and round diamonds, *signed Maz.*

*Please note this property cannot be shipped
internationally due to endangered species
materials.*

● **US\$ 400-600**





THIS PAGE
LOTS 479 & 478





345

PROPERTY OF A PRIVATE COLLECTOR

**Amethyst, Cultured Pearl and Diamond
Necklace, Buccellati**

The torsade composed of ten strands of faceted amethyst beads and cultured pearls of purple hue measuring approximately 4.9 mm, the clasp set with sugarloaf amethyst cabochons, accented by round amethysts and diamonds, *length 16 inches, signed M. Buccellati.*

Please note the pearls have not been tested for natural origin of color.

US\$ 5,000-7,000



△ 346

**Pair of Gold and Diamond Earclips,
David Webb**

Each featuring articulated swags of gold ropework, accented by round and single-cut diamonds, gross weight approximately 15 dwts, *signed David Webb.*

US\$ 2,500-3,500



△ 347

**Pair of Gold, Cultured Pearl and
Diamond Earclips, David Webb**

The hoops embellished with two cultured pearls measuring approximately 12.0 mm, flanked by round diamonds, gross weight approximately 20 dwts, *signed Webb.*

US\$ 3,500-4,500

348

PROPERTY OF A DISTINGUISHED LADY

Gold and Diamond Necklace

The curb link chain highlighting two floral motifs set with round diamonds, gross weight approximately 118 dwts, *length 29½ inches*.

US\$ 8,000-12,000



△ 349

Cultured Pearl and Diamond Bracelet, Seaman Schepps

Composed of sixteen strands of cultured pearls measuring approximately 3.9 to 3.5 mm, the clasp of foliate design set with round and baguette diamonds, *length 9 inches*, signed *Seaman Schepps*.

US\$ 2,200-3,500





△ 350

Diamond Clip-Brooch, David Webb

In the shape of a stylized heart, set with round diamonds, gross weight approximately 16 dwts, *signed Webb*.

US\$ 3,000-4,000



351

PROPERTY OF A PRIVATE COLLECTOR,
LONG ISLAND

**Suite of Diamond Jewelry,
Schlumberger for Tiffany & Co.**

Comprising: the '88 Stone Necklace', '36 Stone Bracelet' and pair of 'Twenty Stone Hoop Earrings', set with round diamonds featuring gold x-shaped accents, *necklace internal circumference 15½ inches, bracelet length 6¾ inches, signed Tiffany & Co., and Schlumberger Studio.*

US\$ 15,000-20,000



△ 352

Pair of Diamond Earclips, Tiffany & Co.

Designed as ribbons, set with round diamonds, *signed Tiffany & Co.*

US\$ 2,000-3,000

△ 353

Gem-Set Necklace and Pendant-Earclips, Tony Duquette

The necklace composed of oval and pear-shaped kunzites within textured claw-like mountings, connected by swags of rock crystal briolettes and peridot beads, *length 19 inches*; the similarly designed earclips set with oval and pear-shaped kunzites, fitted with retractable posts, pendants detachable; *each signed Tony Duquette*.

US\$ 10,000-15,000



354

Peridot and Diamond Ring, Schlumberger for Tiffany & Co.

Centering an oval-shaped peridot weighing approximately 11.96 carats, accented by round and marquise-shaped diamonds of floral motif, *size 6¼, signed Tiffany and Schlumberger, numbered 2429*.

US\$ 8,000-10,000





355

PROPERTY OF AN IMPORTANT PRIVATE COLLECTION

Gold and Diamond Evening Bag

The pentagon-shaped case composed of gold woven in a diamond pattern, the interior fitted with a rectangular mirror, the clasp set with round diamonds, suspended from a double ropetwist chain, gross weight approximately 278 dwts, measuring approximately 6¼ x 3½ x 3¾ inches.

US\$ 8,000-12,000



△ 356

Pair of Carnelian Brooches, Seaman Schepps

The carnelian crescents accented with gold ropework, signed Seaman Schepps.

US\$ 4,000-6,000



357

FROM THE PRIVATE COLLECTION OF A FAMILY IN SAN FRANCISCO

Gold and Diamond Ring

The shank designed as a V-shape, set with a round diamond weighing 3.03 carats, size 7¾.

Accompanied by GIA report no. 1182709789 stating that the diamond is L color, I1 clarity.

US\$ 5,000-7,000

358

PROPERTY FROM A DISTINGUISHED FAMILY

Suite of Emerald and Diamond Jewelry

The tapered necklace of openwork design set with round emeralds and diamonds gathered in a stylized knot motif, *internal circumference 15½ inches*; the bracelet of similar design, *length 6¾*; and a pair of matching earclips. Fitted with posts.

US\$ 10,000-15,000



359

PROPERTY OF A DISTINGUISHED LADY

Diamond Brooch, Asprey

Of floral design, set with numerous round diamonds, *signed Asprey, numbered 303441, with Italian registry and British hallmarks.*

US\$ 5,000-7,000





△ 360

Frosted Glass and Amethyst Necklace and Ring, Tony Duquette

The necklace composed of frosted glass plaques topped with rough amethysts, the textured claw settings accented by round citrines, *length 16 inches, signed Tony Duquette, with two additional links*; together with a matching ring, *size 6³/₄, unsigned.*

US\$ 10,000-15,000



361

PROPERTY OF A VIRGINIA LADY

Opal and Diamond Clip-Brooch

Designed as a stylized foliate cluster of round and marquise-shaped diamonds, highlighted by oval-shaped opal cabochons.

US\$ 10,000-15,000

□ 362 SOLD WITHOUT RESERVE

Gem-Set Necklace and Pair of Earrings

Composed of oval-shaped amethysts accented with butterfly and floral motifs set with variously-cut emeralds, rubies, tanzanites, yellow and white sapphires, and near-colorless, yellow and brown diamonds, *necklace length 15½ inches.*

Please note that the diamonds of yellow and brown hue have not been tested for natural origin of color.

US\$ 15,000-20,000



363

PROPERTY OF A VIRGINIA LADY

Diamond Bracelet

The bracelet composed of clusters set with baguette diamonds, *length 6¼ inches.*

US\$ 12,000-15,000





364

PROPERTY OF A VIRGINIA LADY

Colored Diamond and Diamond Necklace

Suspending seven pear-shaped diamonds of brown hue, framed by round diamonds, the necklace composed of collet-set round diamonds, spaced by rose-cut diamonds, length 15 $\frac{3}{8}$ inches.

Please note that the diamonds brown hue have not been tested for natural origin of color.

US\$ 6,000-8,000



365

Diamond Dress Set

Comprising a pair of cufflinks and four shirt studs representing the four suits of cards, pavé-set with variously shaped diamonds. With fitted box.

US\$ 8,000-12,000



366

PROPERTY FROM A NEW YORK PRIVATE
COLLECTION

Diamond Double Clip-Brooch, France

The pair of scrollwork clips set with two round diamonds, accented by old mine, old European, round and square-cut diamonds, together with a carrier for wear as a double-clip brooch, with French assay marks.

US\$ 12,000-15,000

367

Pair of Green Beryl Earclips, Tiffany & Co., Designed by Louis Comfort Tiffany

Supporting two oval-shaped green beryl beads measuring approximately 20.6 x 15.7 x 8.9 mm, the tops of openwork design, *signed Tiffany & Co.; circa 1915*. Fitted with screw backs.

US\$ 6,500-7,500



368

PROPERTY OF A PRIVATE COLLECTOR

Diamond Ring

Set with an old European-cut diamond weighing 3.13 carats, accented by old European and single-cut diamonds, *size 6½*.

Accompanied by GIA report no. 2185695398 stating that the diamond is F color, VS2 clarity.

US\$ 25,000-35,000



△ 369

Diamond Bracelet

The three rectangular panels set with old mine and old European-cut diamonds, *length 7 inches*.

US\$ 7,000-9,000





370

PROPERTY FROM A NEW YORK PRIVATE
COLLECTION

Diamond Necklace

Composed of numerous old European-cut diamonds, length $14\frac{1}{4}$ inches, with Austrian marks.

US\$ 35,000-45,000



△ 371

Nephrite and Enamel Desk Clock, Tiffany & Co.

The circular dial with Arabic numeral indicators, framed by green enamel in a geometric pattern, within an octagonal-shaped nephrite case measuring $3\frac{5}{8}$ x $3\frac{5}{8}$ inches, mechanical movement, the dial signed *Tiffany & Co.*, 8 days.

US\$ 2,200-3,500



371A

PROPERTY FROM THE WILLIAM A. RICHARDSON
COLLECTION

Gold, Sapphire and Diamond Brooch

In the form of a flower on a twisting stem, the petals set with cabochon sapphires and the leaves set with old mine and rose-cut diamonds, with maker's mark; circa 1900. With original box.

PROVENANCE

*Given by Empress Alexandra Feodorovna to
Marion Louisa "Pollie"*

Delmé-Radcliffe

Baroness Ungern-Sternberg

Thence by descent

*Christie's London, Russian Art, November 29,
2010, lot 221*

US\$ 6,000-8,000

372

PROPERTY OF A DISTINGUISHED PRIVATE
COLLECTOR

Diamond and Emerald Pendant-Brooch

Of scrollwork design, set with old European-cut diamonds and an emerald-cut emerald, with one diamond articulated for movement; fitted with pendant hook; circa 1910.

Accompanied by AGL report no. 1086096 stating that the emerald is of Colombian origin, clarity enhancement: insignificant to minor, type: traditional.

US\$ 10,000-15,000



△ 373

Diamond and Emerald Ring, Tiffany & Co.

Set with a round diamond weighing approximately 1.00 carat, flanked by two round emeralds, size 4 $\frac{3}{4}$, signed Tiffany & Co.

US\$ 5,000-7,000



374

Pair of Diamond Pendant-Earrings

The pendants centering old mine-cut diamonds, further set with old European, single and rose-cut diamonds.

US\$ 6,000-8,000



375

PROPERTY OF A PRIVATE COLLECTOR

Diamond Brooch

The design inspired by the architecture of the 1939 New York World's Fair, set with old European and single-cut diamonds, *numbered 97640; circa 1939.*

The 1939-1940 New York World's Fair was the first exposition to be based on the future, promising visitors they would be looking at the "World of Tomorrow". The opening slogan "Dawn of a New Day" reflected the new horizons the world would progress towards, in particular with technology and architecture. The diamond brooch reproduces the Trylon and Perisphere buildings, designed by Henry Dreyfus, which were the epicenters of the fair and great examples of High Modern architecture. It was the geometric shapes, sweeping curves, and Art Deco influences which paved a grand vision of future American architectural aptitude.

US\$ 7,500-10,000



376

PROPERTY OF A GENTLEMAN, SEATTLE,
WASHINGTON

Diamond Ring

Set with two old European-cut diamonds within a frame of baguette, single and old European-cut diamonds, *size 5½; circa 1920.*

US\$ 18,000-22,000

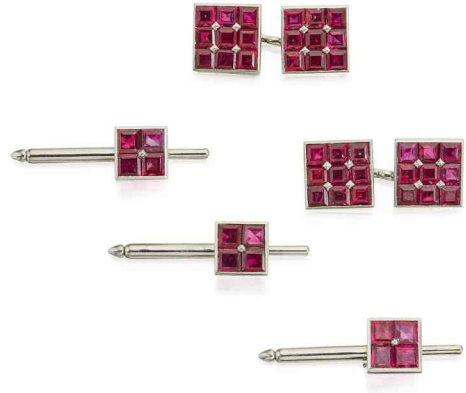


377

Ruby Dress Set, Cartier, Paris

Comprising a pair of cufflinks and three studs; each square face composed of square-cut rubies, *the cufflinks signed Cartier, Paris, numbered 03742, the studs numbered 130180.*

US\$ 9,000-12,000



378

PROPERTY FROM A NEW MEXICO COLLECTION

Sapphire and Diamond Bracelet

Of geometric design, set with four sapphire cabochons, highlighted by calibr -cut sapphires, further accented by old European and single-cut diamonds, *length 6³/₄ inches; circa 1925.*

US\$ 10,000-15,000



379

PROPERTY OF A VIRGINIA LADY

Diamond and Ruby Ring

Set with an old European-cut diamond weighing approximately 1.95 carats, framed by calibr -cut rubies, flanked by single-cut diamonds, *size 4.*

US\$ 6,000-8,000





380

PROPERTY OF A LADY, NEW YORK

**Pair of Sapphire and Diamond Earclips,
Piranesi**

Each surmount set with variously-cut sapphires, suspending similarly-set pendants designed as undulating hoops, highlighted with round diamonds, *signed Piranesi, two diamonds missing*. Fitted with retractable posts.

US\$ 12,000-15,000



381

PROPERTY OF A VIRGINIA LADY

**Diamond, Emerald and Onyx 'Panthère'
Ring, Cartier, France**

Designed as a panther, the head pavé-set with round diamonds, the eyes set with pear-shaped emeralds, the nose set with an onyx cabochon, *size 7, expandable, signed Cartier, numbered 847371, with French assay and workshop marks*.

US\$ 15,000-20,000



382

Pair of Diamond Earrings

Designed as flowers, the petals set with pear-shaped diamonds, the centers set with round diamonds.

Accompanied by 10 GIA reports stating that the diamonds, ranging in size from 0.50 to 0.40 carat, are F-G color, VS1-VS2 clarity.

US\$ 10,000-15,000

383

Pair of Diamond Earrings

The hoop earrings set with numerous round diamonds.

US\$ 8,000-12,000



384

PROPERTY OF A LADY, CHICAGO, ILLINOIS

Diamond and Emerald Bracelet

Of coiled design, the expandable serpent-style bracelet composed of textured scales set with numerous round diamonds, the eyes set with two marquise-shaped emeralds, *with Italian assay and registry marks, three diamonds missing.*

US\$ 15,000-20,000



385

Fancy Intense Yellow Diamond and Diamond Ring

Set with a cut-cornered square modified brilliant Fancy Intense Yellow diamond weighing 3.24 carats, framed and accented by round diamonds, *size 5¾.*

Accompanied by GIA report no. 5182636405 stating that the diamond is Fancy Intense Yellow, Natural Color, VVS1 clarity.

US\$ 30,000-40,000



386

PROPERTY OF A GENTLEMAN, PINE GROVE,
CALIFORNIA

**Suite of Opal, Diamond and Freshwater
Cultured Pearl Jewelry, Ruser**

Comprising a pair of earclips of scroll design set with pear-shaped opals, accented by round diamonds; a brooch designed as a bird, the body set with an opal, accented by round diamonds and baroque freshwater pearls; and a ring set with a polished opal, framed by round diamonds, size 7; all signed Ruser.

US\$ 10,000-15,000



387

Diamond Band Ring

The band set with 17 emerald-cut diamonds,
size 6 $\frac{1}{4}$.

US\$ 20,000-30,000



388

**Tourmaline, Sapphire and Diamond
Bracelet, Marcus & Co.**

Centering an emerald-cut tourmaline, set with
emerald-cut pink and yellow sapphires, accented
by round and single-cut diamonds, length 7 $\frac{1}{4}$
inches, signed Marcus.

US\$ 20,000-30,000



389

Diamond Longchain

Composed of square-shaped links set with round and baguette diamonds, *length 33 inches, detaching into three segments measuring 6½, 6½ and 20 inches allowing for variety of wear.*

US\$ 18,000-22,000



390

PROPERTY FROM THE COLLECTION OF JOAN
OESTREICH KEND

Zircon and Diamond Ring

Centering a round zircon, flanked by single-cut diamonds within a decorative mounting, size 4¾, *with workshop mark.*

US\$ 4,000-6,000



391

PROPERTY FROM A NEW YORK PRIVATE
COLLECTION

Pair of Cultured Pearl and Diamond Earclips

Suspending two cultured pearl drops measuring 12.2 x 12.0 x 14.6 and 12.3 x 12.4 x 13.9 mm, the tops set with numerous graduated round diamonds.

US\$ 6,000-8,000





THIS PAGE
LOTS 535 & 374



PROPERTY OF A DISTINGUISHED PRIVATE COLLECTOR

LOTS 392–398

THIS COLLECTION CONTINUES WITH LOTS 180-185
IN THE MAGNIFICENT JEWELS SALE IN NEW YORK
ON DECEMBER 5, 2017



392

PROPERTY OF A DISTINGUISHED PRIVATE
COLLECTOR

Jade and Diamond Ring

Set with a rectangular-shaped jade cabochon
accented by round and baguette diamonds,
size 6.

US\$ 5,000-7,000



393

PROPERTY OF A DISTINGUISHED PRIVATE
COLLECTOR

Pair of Diamond Barrettes

The stylized foliate motifs set with round
diamonds.

US\$ 4,000-6,000

394

PROPERTY OF A DISTINGUISHED PRIVATE COLLECTOR

Enamel, Diamond and Gem-Set Brooch

Designed as a dragonfly, the articulated wings applied with *plique-à-jour* enamel, set with rose-cut diamonds, the head and body accented by a cabochon sapphire and an oval-shaped pink sapphire, further highlighted with round and rose-cut diamonds, the eyes embellished with opaque green enamel; *circa 1900*.

US\$ 10,000-15,000



395

PROPERTY OF A DISTINGUISHED PRIVATE COLLECTOR

Cultured Pearl and Diamond Clip-Brooch and Ring, France

The brooch designed as a flower, set with a cultured pearl surrounded by round diamonds articulated for movement, within hinged mesh petals further accented by single-cut diamonds, with French export marks and partial workshop mark; the ring of similar design, size 4¾, with French export mark.

US\$ 7,000-9,000



396

PROPERTY OF A DISTINGUISHED PRIVATE
COLLECTOR

Enamel and Diamond Bangle-Bracelet

Designed as a leopard applied with black and white enamel, the body and eyes highlighted with bezel-set round diamonds, *internal circumference 6 inches*.

US\$ 6,000-8,000



397

PROPERTY OF A DISTINGUISHED PRIVATE
COLLECTOR

Suite of Coral, Onyx and Diamond Jewelry

Comprising: a pair of earclips composed of polished coral segments over an arched onyx ground, *signed Tiffany*; a lady's wristwatch composed of a tonneau-shaped coral dial framed by fluted coral and onyx segments, on a black strap, manual movement, *dial signed Laykin et Cie*, movement *signed DeLaneau*, caseback *numbered 6 and 100 16*, with *French export mark*; a matching ring set with fluted coral, onyx and single-cut diamonds, *size 5½*, *signed Laykin et Cie*; and a ring with a dome-shaped polished coral segment, set within an oval-shaped onyx frame, accented by round diamonds, on a hammered gold shank, *size 6½*.

Please note this property cannot be shipped internationally due to endangered species materials.

© US\$ 8,000-12,000



398

PROPERTY OF A DISTINGUISHED PRIVATE
COLLECTOR

**Gold and Diamond Pendant-Brooch,
David Webb**

The kite-shaped brooch composed of hammered
gold and accented with round diamonds, gross
weight approximately 49 dwts, *signed Webb*.
Fitted with pendant hook.

US\$ 8,000-12,000



△ 399

Pair of Diamond Earclips, David Webb

Each hoop highlighted with kite-shaped motifs set
with round diamonds, gross weight approximately
17 dwts, *signed David Webb*.

*Accompanied by Certificate of Authenticity from
David Webb.*

US\$ 2,000-3,000



400

PROPERTY OF A VIRGINIA LADY

Topaz and Diamond Ring, Kurt Wayne

Centering an emerald-cut topaz, embellished
with clusters of round, pear and marquise-
shaped diamonds, *size 7¼, signed KW, numbered
120074*.

US\$ 7,000-9,000



401

PROPERTY FROM A NEW YORK PRIVATE
COLLECTION

Diamond Ring

Centering a pear-shaped diamond weighing 6.65
carats, accented by triangle-shaped diamonds,
size 5½.

*Accompanied by GIA report no. 5181638975
stating that the diamond is G color, SI2 clarity.*

US\$ 50,000-75,000



402

PROPERTY FROM A WEST COAST COLLECTION

Pair of Emerald and Diamond Pendant Earclips, David Webb

Each surmount set with an emerald-cut emerald, encircled with round and marquise-shaped diamonds, suspending a detachable pendant set with round, marquise and pear-shaped diamonds, *signed Webb*. Fitted with posts.

US\$ 20,000-30,000



403

Fancy Intense Yellow Diamond and Diamond Ring, Tiffany & Co.

Set with a cushion-cut Fancy Intense Yellow Diamond weighing 3.54 carats, framed and accented by round diamonds, *size 6, signed Tiffany & Co., numbered 27650392*.

Accompanied by Tiffany & Co. Diamond Certificate 27650392/L09010087 stating that the diamond is Fancy Intense Yellow, Natural Color, VS2 clarity.

US\$ 30,000-50,000



404

PROPERTY OF A NEW YORK CITY LADY

Diamond and Cultured Pearl Double Clip-Brooch, David Webb

Designed as a callalily, set with numerous round diamonds and the detachable center set with an oval-shaped cultured pearl measuring approximately 15.0 x 11.7 mm, *signed Webb*.

US\$ 20,000-30,000





405

**Gold and Diamond Necklace and
Cuff-Bracelet, Van Cleef & Arpels**

The collar of tapered design, highlighted by six links accented with rows of round diamonds, *internal circumference 14½ inches, signed VCA*; the hinged cuff-bracelet of similar design, *internal circumference 6¾ inches, signed VCA, partially numbered.*

US\$ 15,000-20,000



406

**Rutilated Quartz and Diamond Bracelet,
Aletto Brothers**

Composed of faceted rutilated quartz batons, accented by round diamonds, *length 7¼ inches, signed Aletto Bros.*

US\$ 30,000-40,000



△ 407

**Cultured Pearl and Diamond Ring,
David Webb**

Of crossover design, set with two gray cultured pearls measuring approximately 12.5 mm, accented by marquise and pear-shaped diamonds and applied with black enamel, *size 4½, expandable shank, signed David Webb.*

Please note the pearls have not been tested for natural origin of color.

US\$ 3,000-5,000



408

PROPERTY OF A PRIVATE COLLECTOR

Pair of Onyx and Mother-Of-Pearl 'Magic Alhambra' Earclips and Necklace and Onyx 'Vintage Alhambra' Bracelet-Watch, Van Cleef & Arpels

Comprising: a long necklace composed of 16 bezel-set onyx and mother-of-pearl clover motifs, length 50 inches, numbered BL225330, with French assay mark; the matching earclips each with three motifs, fitted with posts, numbered BL208000; the bracelet-watch with nine onyx motifs, including the dial, quartz movement, length 7½ inches, numbered 136674 and HH22219, with Swiss assay marks; all signed VCA.

Please note this property cannot be shipped internationally due to endangered species materials.

● US\$ 20,000-30,000



409

PROPERTY FROM THE COLLECTION OF JOAN OESTREICH KEND

Gold 'Parentesi' Bracelet and Wristwatch, and a 'Doppio Cuore' Ring, Bulgari

The bracelet decorated with polished gold links, gross weight approximately 63 dwts, internal circumference 6½ inches, expandable, signed Bulgari, numbered T31, stamped with Italian assay and registry marks; the wristwatch of similar design, with a round black dial, gross weight approximately 61 dwts, quartz movement, internal circumference 5½ inches, expandable, the caseback signed Bulgari and numbered BJ 01 and G 63918, the watch bracelet signed Bulgari, stamped with maker's mark and Italian assay and registry marks; the ring with an interlocking heart-shaped cutout, gross weight approximately 10 dwts, size 6½, signed Bulgari, stamped with Italian assay and registry marks.

US\$ 6,000-8,000





△ 410

White Coral Necklace, Valentin Magro

Composed of 14 beads, each covered in a mesh of small white coral beads, accented by a hammered gold clasp, length 18¾ inches, unsigned.

Please note this property cannot be shipped internationally due to endangered species materials.

● US\$ 2,000-3,000



411

Gold, Emerald and Diamond Ring, Elizabeth Gage

Centering a collet-set oval-shaped emerald, the textured wide gold band accented with round diamonds, size 7¾, signed Gage, with partial British hallmarks and maker's mark.

Accompanied by AGL report no. 1083428 stating that the emerald is of Colombian origin, clarity enhancement: none.

US\$ 20,000-30,000



412

Gold and Diamond Bracelet, Aletto Brothers

The flexible bracelet composed of gold blocks, topped and bordered by round diamonds, gross weight approximately 134 dwts, length 6¾ inches, signed Aletto Bros. With signed box.

US\$ 15,000-20,000

413

PROPERTY OF A DISTINGUISHED PRIVATE
COLLECTOR

Diamond Ring, Mounted by Cartier

Set with a round diamond weighing 12.92 carats, together with an enamel ring jacket, size 6, jacket size 5¾, the ring signed *Monture*, numbered P8863, with French assay and maker's mark for Cartier, the jacket signed *A. Clunn*.

Accompanied by GIA report no. 2181638800 stating that the diamond is L color, VVS2 clarity.

US\$ 100,000-150,000





△ 414

**Gold, Pink Sapphire and Diamond
Necklace, Judith Ripka**

The chain of alternating matte and textured gold links, spaced at intervals with eight barrel-shaped links set with round pink sapphires, the clasp and a heart-shaped pendant accented with round diamonds, gross weight approximately 79 dwts, length 24 inches, signed JR.

US\$ 4,000-6,000



415

PROPERTY FROM THE COLLECTION OF JOAN
OESTREICH KEND

Diamond Brooch and Pair of Earclips

The brooch of stylized knot design, set with round diamonds; the earclips of similar design, set with round diamonds, framed by ropetwist gold, total gross weight approximately 26 dwts.

US\$ 4,000-6,000

PROPERTY OF SIR SEAN AND LADY MICHELINE CONNERY

LOTS 416–427

THIS COLLECTION CONTINUES WITH LOTS 188-194 IN
THE MAGNIFICENT JEWELS SALE IN NEW YORK ON DECEMBER 5, 2017

416

PROPERTY OF SIR SEAN AND LADY MICHELINE
CONNERY

Pink Sapphire and Diamond Ring

The wide band set with round pink sapphires,
highlighted by round diamonds, *size 5¼*.

US\$ 5,000-7,000



417

PROPERTY OF SIR SEAN AND LADY MICHELINE
CONNERY

Diamond Cuff-Bracelet and Ring

The wide openwork cuff decorated with a
scrollwork motif set with round diamonds,
internal circumference 6½ inches, expandable;
the ring of similar design, *size 6, one diamond
missing*.

US\$ 10,000-15,000



418

PROPERTY OF SIR SEAN AND LADY MICHELINE
CONNERY

Sapphire Ring, France

Set with a cushion-cut sapphire weighing 4.41
carats, *size 7, with French assay mark*.

*Accompanied by AGL report no. 1087023 stating
that the sapphire is of Burmese origin, with no
indications of heating.*

US\$ 8,000-12,000



419



PROPERTY OF SIR SEAN AND LADY MICHELINE
CONNERY

Tanzanite and Diamond Ring

Centering an oval-shaped tanzanite measuring approximately 17.6 x 12.1 x 6.8 mm, framed and accented by round diamonds, size 6¾, with *British hallmarks*.

US\$ 6,000-8,000



420

PROPERTY OF SIR SEAN AND LADY MICHELINE
CONNERY

Suite of Coral, Lapis Lazuli and Diamond Jewelry, Chaumet, Paris

Comprising a clip-brooch, ring and earclips of abstract geometric design set with polished segments of coral and lapis lazuli framed with textured gold and accented with round diamonds, *ring size 6, signed Chaumet Paris, with French assay and maker's marks, one diamond missing*.

Please note this property cannot be shipped internationally due to endangered species materials.

© **US\$ 7,000-9,000**

421

PROPERTY OF SIR SEAN AND LADY MICHELINE
CONNERY

**Pair of Gold and Diamond Earclips and
Necklace**

The necklace composed of fluted gold links set
with round diamonds, *internal circumference*
15½ inches, signed Chaumet Paris; the earclips of
similar design, *unsigned*.

US\$ 15,000-20,000



422

PROPERTY OF SIR SEAN AND LADY MICHELINE
CONNERY

Pair of Gold and Diamond Earclips

Of doorknocker design, set with numerous round
diamonds spaced by gold segments; *the hoops*
detachable.

US\$ 10,000-15,000



423

PROPERTY OF SIR SEAN AND LADY MICHELINE
CONNERY

Pair of Emerald and Diamond Pendant- Earclips

The surmounts set with round, marquise-shaped and square-cut diamonds, suspending detachable pear-shaped emeralds weighing approximately 8.95 and 8.90 carats, framed by round and marquise-shaped diamonds. Fitted with posts.

Accompanied by AGL report no. 1087027 A and B stating that the emeralds are of Colombian origin, clarity enhancement: minor, type: traditional.

US\$ 25,000-35,000



424

PROPERTY OF SIR SEAN AND LADY MICHELINE
CONNERY

Emerald Ring

Set with a square emerald-cut emerald weighing approximately 6.40 carats, size 5³/₄.

Accompanied by AGL report no. 1087030 stating that the emerald is of Colombian origin, clarity enhancement: minor, type: traditional.

US\$ 10,000-15,000



425

PROPERTY OF SIR SEAN AND LADY MICHELINE
CONNERY

Diamond Necklace

The stylized foliate design, set with numerous
round diamonds, *internal circumference*
15¼ inches.

US\$ 15,000-20,000



426

PROPERTY OF SIR SEAN AND LADY MICHELINE
CONNERY

Sapphire Ring

Set with an emerald-cut sapphire weighing 8.74
carats, *size 6.*

*Accompanied by AGL report no. 1087022 stating
that the sapphire is of Ceylon origin, with no
indications of heating.*

US\$ 15,000-20,000



427

PROPERTY OF SIR SEAN AND LADY MICHELINE
CONNERY

Diamond Clip-Brooch

Of foliate design, set with round diamonds.

US\$ 6,000-8,000





THIS PAGE
LOTS 331 & 462





428

Multi-Colored Sapphire and Diamond Bracelet, Anna Hu

The bracelet set with variously-colored cushion-cut sapphires, accented by round diamonds, length 7 inches, signed Anna Hu.

Accompanied by GIA report no. 2175509520 stating that nine of the sapphires are Natural Corundum, with no indications of heating.

US\$ 15,000-20,000



429

PROPERTY FROM AN IMPORTANT PRIVATE COLLECTION, CONNECTICUT

Pair of Diamond and Pink Sapphire Earclips, Michele della Valle

Each suspending two lines of bezel-set round diamonds anchored by two drop-shaped pendants set with rose-cut pink sapphires and diamonds, numbered 10512, with maker's mark. Fitted with posts.

US\$ 15,000-20,000



430

Diamond Bracelet

Composed of geometric links set with round and baguette diamonds, length 7¼ inches.

US\$ 7,000-9,000

431

PROPERTY OF A VIRGINIA LADY

Aquamarine and Sapphire Pendant-Necklace

Suspending a pear-shaped aquamarine, the chain collet-set with round sapphires, *length 40¾ inches; the pendant detachable.*

US\$ 7,000-9,000



432

PROPERTY OF A LADY

Pair of Diamond 'Parentesi' Earclips, Bulgari

Of geometric design, set with round diamonds, *signed Bulgari, with Italian assay and registry marks. Fitted with posts. With signed box.*

US\$ 10,000-15,000



433

PROPERTY OF AN IMPORTANT PRIVATE COLLECTION

Diamond Wristwatch, Graff

The rectangular blue dial with Roman numeral indicators embellished with round diamonds, featuring a subsidiary dial for constant seconds, further framed by round diamonds, *the dial signed Graff, the buckle and caseback signed Graff London, the caseback numbered 0120, with Swiss assay and maker's marks.*

Please note this property cannot be shipped internationally due to endangered species materials.

© **US\$ 8,000-12,000**





434

PROPERTY OF A PRIVATE COLLECTOR, PHOENIX, ARIZONA

Diamond Ring and Band Ring

The heart-shaped diamond weighing 3.79 carats, flanked by tapered baguette diamonds, together with a band ring fitted to the bottom of the diamond set with baguette and whistle-cut diamonds, size 7³/₄.

Accompanied by GIA report no. 2185709008 stating that the diamond is D color, VS2 clarity.

US\$ 30,000-40,000



435

FORMERLY FROM THE COLLECTION OF WILLIAM B. DIETRICH

Sapphire and Diamond Bracelet, Oscar Heyman & Brothers

Set with emerald-cut sapphires, accented by round, baguette and marquise-shaped diamonds, length 7⁷/₈ inches, numbered 82263, with maker's mark; circa 1965.

PROVENANCE

Sotheby's New York, December 9, 2010, *Jewels from the Estate of William B. Dietrich Sold to Benefit the William B. Dietrich Foundation*, lot 38.

US\$ 35,000-55,000



436

PROPERTY OF A PRIVATE COLLECTOR

Diamond Clip-Brooch, Oscar Heyman & Brothers

Of foliate design, set with numerous round diamonds, accented by baguette diamonds, numbered 71000.

Accompanied by certificate from Oscar Heyman & Brothers stating that the brooch, stock number 71000, was manufactured by Oscar Heyman & Brothers in 1987.

US\$ 20,000-30,000

437

PROPERTY OF A DISTINGUISHED PRIVATE
COLLECTOR

Pair of Diamond and Cultured Pearl Pendant-Earclips

The tops set with round diamonds weighing 8.64
and 7.08 carats, supporting detachable cultured
pearl drops measuring approximately 12.9 by 14.9
mm. Fitted with posts.

*Accompanied by GIA report no. 5181639158
stating that the diamond weighing 8.64 carats is
M color, VS2 clarity.*

*Accompanied by GIA report no. 2185638921
stating that the diamond weighing 7.08 carats is
Q-R color, VS2 clarity.*

US\$ 60,000-80,000





438

PROPERTY FROM A NEW YORK PRIVATE
COLLECTION

Diamond Brooch

Of foliate design, set with round, baguette and
marquise-shaped diamonds.

US\$ 15,000-20,000



439

PROPERTY OF A LADY

Aquamarine Pendant, Paolo Costagli

The cushion-cut aquamarine weighing 296.31
carats, with maker's mark for Paolo Costagli.

*Accompanied by GIA report no. 13398668 stating
that the aquamarine is natural.*

US\$ 18,000-22,000



440

PROPERTY FROM A DISTINGUISHED FAMILY

Diamond Bracelet

The line bracelet composed of 38 emerald-cut
diamonds, length 6 $\frac{7}{8}$ inches.

US\$ 15,000-20,000

441

PROPERTY OF A MIDWESTERN COLLECTOR

Diamond Clip-Brooch

Designed as a rose, the center set *en tremblant* with an old European-cut diamond, pavé-set with baguette and single-cut diamonds.

US\$ 6,000-8,000



442

PROPERTY FROM THE COLLECTION OF FANNY GRUNBERG, NEW YORK, NEW YORK

Diamond Band Ring

The band set with graduated marquise-shaped diamonds, alternating with tapered baguette diamonds, size 6½.

US\$ 6,000-8,000



443

PROPERTY OF A LADY

Rubellite and Colored Diamond Ring, Paolo Costagli

Set with a cushion-cut rubellite measuring approximately 20.0 x 20.0 x 10.5 mm, the mounting accented by round diamonds of yellow hue, size 6, with maker's mark for Paolo Costagli.

Please note that the diamonds of yellow hue have not been tested for origin of color.

US\$ 7,500-10,000





444

PROPERTY OF A MIDWESTERN COLLECTOR

**Diamond and Sapphire Brooch,
Tiffany & Co.**

Designed as a bow, set with round diamonds,
accented by calibré-cut sapphires, *signed Tiffany
& Co.*

US\$ 8,000-12,000



445

PROPERTY OF A PRIVATE COLLECTOR

Platinum and Diamond Bracelet

The tapered design centering an openwork
panel set with five marquise-shaped diamonds,
accented by round and baguette diamonds,
length 6¾ inches.

US\$ 18,000-22,000



446

**Sapphire and Diamond Ring,
Tiffany & Co.**

Set with rows of alternating round diamonds and
calibré-cut sapphires, *size 7¼, signed Tiffany & Co.*

US\$ 8,000-12,000

447

PROPERTY FROM A NEW YORK ESTATE

Sapphire Necklace

Of straightline design, set with calibr -cut sapphires, length 15 inches.

US\$ 8,000-12,000



448

PROPERTY OF A PRIVATE COLLECTOR

Diamond and Sapphire Ring, Cartier

The center pav -set with round diamonds, encircled by baguette diamonds and sapphire cabochons, size 7¹/₄, signed Cartier, numbered 81836; circa 1935.

US\$ 6,000-8,000



△ 449

Pair of Synthetic Sapphire and Diamond Pendant-Earclips

The tops set with round diamonds supporting detachable drops set with cushion-cut synthetic sapphires within a surround of round diamonds. Fitted with posts.

US\$ 4,000-6,000



450

PROPERTY OF A COLORADO COLLECTION

Sapphire and Diamond Ring

Centering an oval-shaped sapphire weighing 13.31 carats, bordered by baguette diamonds, accented by round diamonds, size 5¾, with workshop mark.

Accompanied by AGL report no. 1086881 stating that the sapphire is of Burmese origin, with no indications of heating.

US\$ 40,000-60,000



451

PROPERTY OF A PRIVATE COLLECTOR, ALBERTA,
CANADA

Diamond Ring

Set with a round diamond weighing 3.13 carats,
size 6½.

*Accompanied by GIA report no. 5181721746
stating that the diamond is E color, VS1 clarity.*

US\$ 30,000-50,000



452

PROPERTY FROM THE COLLECTION OF JOAN
OESTREICH KEND

Diamond Brooch

The flower centering an emerald-cut diamond,
accented by round and baguette diamonds, the
stem set with two marquise-shaped diamond
leaves, *the stem is detachable.*

US\$ 20,000-30,000



453

Pair of Pink Sapphire and Diamond Earrings

Set with oval-shaped pink sapphires weighing
3.36 and 3.27 carats, framed and accented by
round diamonds.

Accompanied by two GIA reports:

*No. 2175818818 stating that the pink sapphire
weighing 3.36 carats are of Madagascan origin,
Natural Corundum, with indications of heating.*

*No. 2175818764 stating that the pink sapphire
weighing 3.27 carats are of Madagascan origin,
Natural Corundum, with indications of heating.*

US\$ 12,000-15,000



454

PROPERTY FROM THE COLLECTION OF FANNY
GRUNBERG, NEW YORK, NEW YORK

Diamond Ring

Centering a round diamond weighing 4.00 carats,
surrounded by tapered baguette diamonds,
further accented by round diamonds, size 5½.

*Accompanied by GIA report no. 2185280355
stating that the diamond is G color, VS2 clarity.*

US\$ 40,000-60,000



455

PROPERTY OF A PRIVATE COLLECTOR

Sapphire, Emerald, Colored Diamond and Diamond Pendant-Brooch

Of jardinière design, set with diamonds accented by carved sapphires and emeralds, the base of the vase highlighted by an old European-cut diamond of yellow hue weighing approximately 1.10 carats, accented by enamel; *circa 1930*.

Accompanied by GIA report no. 5182746780 stating that the diamond of yellow hue is of Natural Color.

US\$ 10,000-15,000



456

FROM THE PRIVATE COLLECTION OF A FAMILY IN SAN FRANCISCO

Diamond and Sapphire Wristwatch, Audemars Piguet

The circular silvered dial with baton indicators, surrounded by alternating round diamonds and baguette sapphires, the bracelet further set with round diamonds and calibré-cut sapphires, manual movement, *the dial signed Audemars Piguet, the caseback numbered 53778, with maker's mark.*

US\$ 6,000-8,000



457

Sapphire and Diamond Double Clip-Brooch

Of scroll design, set with round and calibré-cut sapphires, accented by round, baguette and single-cut diamonds.

US\$ 6,000-8,000





THIS PAGE
LOT 458



THE ELIZABETH A. KECK COLLECTION

A CONNOISSEUR'S EYE LOTS 458–472

THIS COLLECTION CONTINUES WITH LOTS 188-194
IN THE MAGNIFICENT JEWELS SALE IN NEW YORK
ON DECEMBER 5, 2017

With a collection spanning the best of the *Ancien Régime* featuring 18th Century French furniture and objets d'art, many with outstanding provenance, to Chinese Export porcelain and a Gobelins tapestry, delving into Impressionist & Modern Art, embracing American Art and celebrating Contemporary Art, Elizabeth Avery Keck's passion for the best has been a Leitmotif of her connoisseurship over the decades, as evident in her Bel Air residence *La Lanterne* and Holmby Hills' *Villa Cornelia*. "Libby"—as she was known—studied at the Juilliard School, which charged her initial pursuit of arts and music, as did extensive international travel, fueling an appreciation for classical architecture and interiors from an early age on. Her tireless dedication to the study of French furniture and decorative arts led her to become a highly regarded connoisseur, widely respected amongst renowned scholars of 18th Century French decorative arts, including Theodore Dell, who consulted for experts in the field including former Getty Museum curator of decorative arts, Gillian Wilson.

Libby relentlessly honed her eye, mastering a vibrant vision for her California residences while working closely with tastemakers and interior decorators such as Jacques Grange. Her resolute commitment to detail was apparent in every aspect of her home—whether consciously

choosing to brighten the classical color palettes of formal *maisons particulières* with explosive colors in bold works by Helen Frankenthaler and Serge Poliakoff—or deliberately deploying the California sunlight into her homes, beautifully dappled light as captured in the Mary Cassatt featured above the fireplace. Beyond a discerning vision and verve for her chosen interiors, Libby's creative reach also included exquisite landscape designs, partnering with noted Los Angeles landscape architect Joseph Copp. And, perhaps the ultimate tribute to her passion for bursts of color is exemplified in Libby's collection of superb jewels. Rubies, sapphires, emeralds and diamonds, she presented a testimony to her love of color by simply wearing them.

"It seems to me that love and the passion of genius never die, they remain forever in an object", Libby once commented. It is this throbbing pulse and strength that persistently attracted Libby to each work of art she acquired and formed a lifestyle collection in which so many collecting categories created a warm splendor, filling rooms not only visually, but also with original musical compositions she wrote for voice and played on her grand piano—and, as Libby so aptly once noted about her passionate pursuit of beauty: "My eye, my heart, my love told me I must have it!".

A note by Jacques Grange, renowned interior designer and art collector

Libby Keck was passionate about 18th Century France, and like the erudite Americans of her era, she studied the subject to the fullest extent. In her Bel Air home, for instance, she chose as her inspiration La Lanterne, Louis de Noailles' legendary hunting lodge in Versailles.

Libby chose me to direct the transformation of her home, and we tackled every challenge together. I took care of searching for the right fabrics and boiserie panels and dealt with details like verifying the dimensions of each window. She wanted to be absolutely certain that this new

residence reflected French culture in the most authentic manner possible. We spent two years collaborating harmoniously to achieve her goals.

She was one of the first great clients with whom I had the honor of working, and Libby placed her trust in me as I was just beginning my career. I was just a young decorator at the time, but after my collaborations with her, I was able to work with the great collectors and dealers in the 18th Century realm, such as Didier Aaron. Libby gave me the wings I needed to start my career and was one of the great muses to enter my life.





458

THE ELIZABETH A. KECK COLLECTION

Cultured Pearl and Diamond Necklace

Composed of cultured pearls measuring approximately 9.9 to 9.4 mm, the hidden clasp accented by round diamonds, *length 86¼ inches.*

US\$ 10,000-15,000



459

THE ELIZABETH A. KECK COLLECTION

Pair of Cultured Pearl and Diamond Earclips

Set with two oval-shaped cultured pearls measuring approximately 17.4 x 13.7 and 17.4 x 13.3 mm, topped by graduated round diamonds.

US\$ 25,000-35,000



460

THE ELIZABETH A. KECK COLLECTION

Diamond 'Frivole' Ring, Van Cleef & Arpels, France

The between-the-finger ring designed as two flowers set with numerous round diamonds, size 5½, signed VCA, numbered 48 BL87663, with French assay and workshop marks.

US\$ 5,000-7,000

461

THE ELIZABETH A. KECK COLLECTION

**Cultured Pearl and Diamond Necklace,
Van Cleef & Arpels**

The two-strand necklace composed of 63 graduated cultured pearls measuring approximately 13.6 to 9.6 mm, the clasp designed as a flower set with round diamonds, *length 15 inches, signed VCA, numbered NY39337.*

US\$ 15,000-20,000



462

THE ELIZABETH A. KECK COLLECTION

**Amethyst, Diamond and Ruby
'Bird on a Rock' Brooch, Tiffany & Co.,
Schlumberger Studios**

Set with a large cushion-cut amethyst, surmounted by a bird set with round diamonds, the eye set with a round ruby, *signed Tiffany & Co., Schlumberger Studios, numbered 17124021.*

US\$ 10,000-15,000



463

THE ELIZABETH A. KECK COLLECTION

Cultured Pearl and Diamond Necklace

Composed of 27 graduated cultured pearls measuring approximately 17.2 to 14.9 mm, the clasp set with baguette diamonds, *length 18¼ inches, with Italian assay and registry marks.*

US\$ 10,000-15,000



464

THE ELIZABETH A. KECK COLLECTION

Pair of Pink Sapphire and Diamond Earclips

Set with two oval-shaped pink sapphires weighing 5.12 and 5.05 carats within a surround of alternating round and princess-cut diamonds.

Accompanied by AGL report nos. 1087475 and 1087476 stating that the sapphires are of Madagascar origin, with indications of heat treatment.

US\$ 20,000-30,000



465

THE ELIZABETH A. KECK COLLECTION

**Diamond and Mother-of-Pearl
'Secret Miroir des Eaux' Wristwatch,
Van Cleef & Arpels, Van Cleef & Arpels**

The concealed rectangular dial with diamond-set dot indicators, the bezel framed by round diamonds, the curved rectangular case of floral design, highlighted by round diamonds, the lugs and clasp further set with round diamonds, completed by a black satin strap, quartz movement, *length 8 inches, the dial, caseback and strap signed Van Cleef & Arpels, the caseback numbered HH1621 3386101, with Swiss assay and maker's marks.*

Please note this property cannot be shipped internationally due to endangered species materials.



● **US\$ 10,000-15,000**

466

THE ELIZABETH A. KECK COLLECTION

**Pair of Cultured Pearl and Diamond
Earclips, Bulgari**

Set with two cultured pearls measuring approximately 17.2 and 17.0 mm, accented by trapeze-cut diamonds, *signed Bulgari.*



US\$ 10,000-15,000

467

THE ELIZABETH A. KECK COLLECTION

Mabé Pearl and Diamond Clip-Brooch

The mabé pearl measuring approximately 15.1 x 15.1 x 10.9 mm, set within a shield-shaped frame accented with round, baguette and half moon-shaped diamonds.



US\$ 4,000-6,000

468

THE ELIZABETH A. KECK COLLECTION

Gold Double Choker, Marina B, France

Composed of two rows of triangular-shaped gold segments, gross weight approximately 104 dwts, *internal circumference 10¾ and 11¼ inches, expandable; chokers detachable for variety of wear, signed Marina B. France, with French assay and maker's marks.*

US\$ 7,000-9,000



469

THE ELIZABETH A. KECK COLLECTION

Pair of Rubellite, Sapphire and Diamond 'Gina' Earclips, Marina B., France

Set with oval-shaped rubellites, accented by oval-shaped sapphires, topped by fancy-shaped pink sapphires, edged by round diamonds, *signed Marina B. France, with French assay and maker's marks.*

US\$ 15,000-20,000



470

THE ELIZABETH A. KECK COLLECTION

Pair of Ruby and Diamond Earclips

Set with cushion-cut rubies weighing 6.06 and 6.05 carats, framed by round diamonds, supporting a fringe of pear-shaped diamonds.

Accompanied by AGL reports no. CS 49761 A and B stating that the rubies are of Thai origin, with indications of heating.

US\$ 40,000-60,000



471

THE ELIZABETH A. KECK COLLECTION

Pair of Diamond Bracelets

Each composed of a line of square-cut diamonds, length 7 and 7⁷/₈ inches, numbered 602 and 477.

US\$ 20,000-30,000



472

THE ELIZABETH A. KECK COLLECTION

Pair of Ruby and Diamond Earclips, Van Cleef & Arpels

Centering cabochon rubies measuring approximately 11.1 x 9.1 x 4.3 and 11.0 x 9.0 x 4.5 mm, framed by round diamonds, *signed VCA, numbered 534H-2.*

US\$ 7,000-9,000



End of Session One



THIS PAGE
LOTS 457 & 448

SESSION TWO

NEW YORK
THURSDAY
7 DECEMBER 2017
2PM

LOTS 473-615

Please note these lots are
not shown in actual size





473

PROPERTY FROM A PRIVATE COLLECTION

**Pair of Gold and Coral Earclips,
Van Cleef & Arpels**

The fluted gold surmounts suspending coral bead tassels, each strand terminating with a fluted gold bead, *signed VCA NY, numbered 3V532.7.*

Please note this property cannot be shipped internationally due to endangered species materials.

● **US\$ 5,000-7,000**



△ 474

**Shell, Coral and Turquoise Clip-Brooch,
Seaman Schepps**

The iridescent shell decorated with two turquoise cabochons, a pierced coral cabochon and gold ropework, *signed Seaman Schepps.*

Please note this property cannot be shipped internationally due to endangered species materials.

The iconic turbo shell jewels were first introduced by Seaman Schepps in the late 1940s. Legend has it, the collection began after a client brought Mr. Schepps a shell necklace from a trip abroad. The jeweler was immediately taken with the novel use of material, and soon began creating earclips from natural turbo shells, ornamented with gold wire, pearls, coral, turquoise and other precious gems. The series had immediate success and the turbo shell quickly became their signature jewel.

● **US\$ 2,000-3,000**



475

PROPERTY OF A LADY

Pair of Gold Earclips, David Webb

Of swirled design, composed of hammered gold, gross weight approximately 16 dwts, *signed Webb.*

US\$ 3,000-5,000

△ 476

Cultured Pearl and Diamond Necklace, David Webb

Composed of five strands of cultured pearls measuring approximately 11.0 to 7.7 mm, with a hammered gold clasp accented by round diamonds, *length 18½ inches, signed Webb.*

US\$ 5,000-7,000



477

PROPERTY OF A PRIVATE COLLECTOR

Diamond Ring

Set with a round diamond weighing 3.55 carats, accented by round diamonds, *size 8.*

Accompanied by GIA report no. 14337399 dated April 21, 2005 stating that the diamond is G color, VS2 clarity.

US\$ 20,000-30,000





478

**Sapphire, Ruby and Diamond Brooch,
Van Cleef & Arpels, France**

Designed as a pair of birds on a flowering branch, the bodies set with cabochon sapphires, the heads set with round and single-cut diamonds, completed by ruby eyes, the flowers set with round sapphires, rubies and diamonds, *signed Van Cleef & Arpels, numbered 56067, French assay and partial workshop mark.*

US\$ 8,000-12,000



479

PROPERTY FROM A WEST COAST COLLECTION

**Gold, Ruby and Diamond Bracelet,
Kutchinsky**

Of floral design, the rotating textured gold flowerheads set with round rubies and diamonds, *length 7 inches, signed 'SSS' for Kutchinsky, with British hallmarks.*

US\$ 10,000-15,000



480

**Ruby and Diamond Ring, Schlumberger
for Tiffany & Co.**

Set with an oval-shaped ruby weighing 3.46 carats, between crossover motifs set with round diamonds on a decorative gold mounting, *size 6¼, signed Schlumberger and Tiffany & Co.*

Accompanied by SSEF report no. 90415 stating that the ruby is of Thai origin, with indications of heating.

US\$ 20,000-30,000

481

PROPERTY OF A DISTINGUISHED PRIVATE COLLECTOR

Gold, Sapphire and Diamond Necklace, Tiffany & Co.

Of fringe design, composed of gold links, accented by round sapphires and diamonds, *internal circumference 13¼ inches, signed Tiffany & Co, with workshop mark.*

US\$ 7,000-9,000



482

Gold and Diamond 'Snowflake' Brooch, Van Cleef & Arpels, France

The openwork snowflake set with old European and single-cut diamonds, *signed Van Cleef & Arpels, with French assay marks.*

US\$ 15,000-20,000



483

PROPERTY OF A VIRGINIA LADY

Diamond and Ruby Ring

Set with an old European-cut diamond within a double surround of round rubies and old European-cut diamonds, *size 5½.*

PROVENANCE

Sotheby's New York, December 6, 2000, Important Jewels, lot 234.

US\$ 10,000-15,000





484

Two Gold Necklaces

Comprising: a gold necklace composed of curb link chains, accented by coiled gold motifs, gross weight approximately 91 dwts, length 36½ inches; a gold necklace composed of alternating marquise-shaped gold links, gross weight approximately 121 dwts, length 32 inches.

US\$ 8,000-12,000



485

Spinel Ring

Set with a cushion-cut spinel weighing 5.33 carats, size 11½.

Accompanied by AGL report no. 1087651 stating that the spinel is natural, of Burmese origin, with no indications of clarity enhancement.

US\$ 15,000-20,000



△ 486

Pair of Diamond Earclips, Oscar Heyman & Brothers

Of tapered design, set with round and baguette diamonds, numbered 703883, with maker's mark. Fitted with posts.

US\$ 3,000-4,000

487

Gold and Diamond 'Spiga' Necklace and Earclips, Bulgari

Composed of gold chevron links, set at intervals with round diamonds, total gross weight approximately 113 dwts, necklace length 15 inches, signed Bulgari, with Italian assay and registry marks.

US\$ 15,000-20,000



488

PROPERTY FROM THE ESTATE OF ROSE SACHS,
PALM BEACH

Gold, Diamond and Sapphire Clip-Brooch, France

Designed as two flowers, one set with round diamonds and the other set with round sapphires, decorated with gold fringes, the stems further accented with round diamonds, gross weight approximately 24 dwts, with French assay and partial workshop marks.

US\$ 5,000-7,000



△ 489

Resin and Lapis Lazuli Ring

The red resin hololith topped with an oval-shaped lapis lazuli cabochon, size 5½.

US\$ 1,500-2,000





490

PROPERTY OF A VIRGINIA LADY

**Sapphire, Diamond and Enamel
Bracelet, Lucien Gautrait, France**

Composed of four arched openwork links, each set with cushion-cut sapphires, accented by old European-cut diamonds, joined by oval-shaped links applied with white enamel, *length 7¼ inches, signed L. Gautrait, with French assay marks; circa 1900.*

US\$ 15,000-20,000



491

PROPERTY OF A PRIVATE COLLECTOR

**Gold, Diamond and Ruby Ring,
Tiffany & Co.**

Designed as a snake, the head set with an old European-cut diamond and two round rubies, *size 8¾, signed Tiffany & Co.*

US\$ 4,000-6,000



491A

PROPERTY FROM THE WILLIAM A. RICHARDSON
COLLECTION

**Gold, Sapphire and Diamond Brooch,
St. Petersburg**

Formed as a flower on a twisting stem, the petals set with old European-cut sapphires, old mine and rose-cut diamonds, *with maker's mark AK; circa 1890.*

PROVENANCE

*Given by Empress Alexandra Feodorovna to
Marion Louisa "Pollie" Delmé-Radcliffe
Baroness Ungern-Sternberg
Thence by descent
Christie's London, Russian Art, November 29,
2010, lot 222*

US\$ 7,500-10,000

492

Pair of Citrine and Diamond Pendant-Earclips, Buccellati

The surmounts set with round citrines accented by round and single-cut diamonds, suspending two pear-shaped citrines framed by round and single-cut diamonds, *with Italian registry mark for Buccellati*. Fitted with posts.

US\$ 8,000-12,000



493

PROPERTY OF A DISTINGUISHED LADY

Pair of Diamond Earrings

Each set with old mine-cut diamonds weighing approximately 2.65 and 2.50 carats.

US\$ 15,000-20,000



494

PROPERTY FROM AN ESTATE, NEW YORK

Ruby, Diamond and Enamel Cuff-Bracelet

Designed as a snake, the head set with an oval-shaped ruby framed and highlighted by old European and single-cut diamonds, the eyes set with round rubies, the hinged body applied with yellow and green enamel, *internal circumference 6½ inches*.

US\$ 5,000-7,000



PROPERTY FROM A NEW YORK ESTATE

LOTS 495-516

THIS COLLECTION CONTINUES WITH LOTS 282-289 IN
THE MAGNIFICENT JEWELS SALE IN NEW YORK ON DECEMBER 5, 2017



THIS PAGE,
LOTS 510 & 508





495

PROPERTY FROM A NEW YORK ESTATE

Gold Bracelet, Van Cleef & Arpels

Of braided design, composed of fluted gold, gross weight approximately 67 dwts, *signed Van Cleef and Arpels, numbered 55672.*

US\$ 4,000-6,000



496

PROPERTY FROM A NEW YORK ESTATE

Gold Belt, Gucci

Composed of curb links, gross weight approximately 353 dwts, *length 34½ inches, signed Gucci.*

US\$ 12,000-15,000



497

PROPERTY FROM A NEW YORK ESTATE

Gold Cuff Bracelet, Bulgari, Italy

Composed of tapered gold segments, gross weight approximately 82 dwts, *internal circumference 6 inches, signed Bulgari, with Italian assay and registry marks, numbered BA 13330. With signed box.*

US\$ 5,000-7,000

498

PROPERTY FROM A NEW YORK ESTATE

Turquoise and Diamond Pendant-Brooch

Centering a square-shaped turquoise cabochon surrounded by ribbons set with old mine and old European-cut diamonds, suspending a detachable pendant set with round diamonds and pear-shaped turquoise cabochon.

US\$ 7,500-10,000



499

PROPERTY FROM A NEW YORK ESTATE

Pair of Turquoise, Cultured Pearl, and Diamond Earclips, Seaman Schepps

Designed as clusters of turquoise cabochons, cultured pearls and round diamonds, *partially signed Seaman Schepps, with maker's mark.*

US\$ 3,500-4,500



500

PROPERTY FROM A NEW YORK ESTATE

Gold and Colored Stone 'Melone' Evening Bag and Case, Bulgari

The oval-shaped evening bag of fluted design, with a cabochon sapphire thumbpiece, completed by a black tassel, fitted with an oval magnifying mirror, gross weight approximately 295 dwts, *signed Bulgari, numbered BV 756, with maker's mark*; together with a matching pill case set with a round ruby thumbpiece, gross weight approximately 24 dwts, *signed Bulgari*. With fitted carrier envelope.

US\$ 10,000-15,000



501

PROPERTY FROM A NEW YORK ESTATE

**Pair of Blue Topaz and Diamond
Pendant-Earclips, Verdura, France**

Of ribbon design, suspending two detachable pear-shaped blue topaz briolettes measuring approximately 25.3 x 19.2 x 12.5 mm each, the tops set with round diamonds, *signed Verdura, with French assay and workshop marks. With signed box.*

US\$ 10,000-15,000



502

PROPERTY FROM A NEW YORK ESTATE

**Cultured Pearl, Diamond and Enamel
Necklace**

Composed of 30 semi-baroque cultured pearls measuring approximately 15.0 to 12.9 mm, the clasp set with an old European-cut diamond measuring approximately 12.3 x 12.3 x 7.0 mm, accented by old European and single-cut diamonds, highlighted with black enamel, *clasp signed Cartier Paris, length 20½ inches. With signed pouch.*

US\$ 25,000-35,000



503

PROPERTY FROM A NEW YORK ESTATE

Cultured Pearl, Ruby and Diamond Necklace

Composed of 22 cultured pearls measuring approximately 16.9 to 9.9 mm, accented by 21 seed pearls, the clasp set with a cushion-cut ruby weighing 5.70 carats, flanked by round and triangle-shaped diamonds, *length 17½ inches*.

Accompanied by AGL report no. 1087174 stating that the ruby is of Burmese origin, with no indications of heating, clarity enhancement: minor, type: oil.

US\$ 10,000-15,000



504

PROPERTY FROM A NEW YORK ESTATE

Enamel and Diamond Desk Clock, Cartier

The circular dial with Roman numeral indicators, the dial and bezel decorated with pink enamel, the hands set with rose-cut diamonds, mechanical movement, *the dial signed Cartier; circa 1910*.

US\$ 6,000-9,000



505

PROPERTY FROM A NEW YORK ESTATE

Pair of Ruby and Diamond Clips

The shield-shaped clips with baguette and old European-cut diamonds, accented by round and oval-shaped rubies.

US\$ 15,000-20,000





506

PROPERTY FROM A NEW YORK ESTATE

Lapis Lazuli, Diamond and Turquoise Clip-Brooch, Cartier

Designed as a cluster of lapis lazuli beads studded with diamonds, the beads measuring approximately 12.5 to 8.3 mm, the top accented by turquoise cabochons and additional single-cut diamonds, *signed Cartier*.

US\$ 10,000-15,000



507

PROPERTY FROM A NEW YORK ESTATE

Sapphire and Diamond Bracelet

Set with six double cabochon sapphires, accented with calibr e-cut sapphires, further accented by numerous rose-cut diamonds, *length 8 inches*.

US\$ 5,000-7,000



508

PROPERTY FROM A NEW YORK ESTATE

Pair of Lapis Lazuli and Diamond Earclips, France

Composed of lapis lazuli beads, accented by round diamonds and gold ropework, *with French assay and workshop marks, one lapis bead missing*.

US\$ 2,500-3,500

509

PROPERTY FROM A NEW YORK ESTATE

**Lapis Lazuli, Turquoise and Diamond
Necklace, Cartier**

Composed of lapis lazuli beads measuring approximately 27.0 to 5.9 mm, accented by turquoise cabochons, further set with round and baguette diamonds, *signed Cartier, numbered 53 47575.*

US\$ 10,000-15,000



510

PROPERTY FROM A NEW YORK ESTATE

**Gold and Lapis Lazuli Bracelet,
Boucheron**

Of padlock design, composed of lapis lazuli and gold, gross weight approximately 65 dwts, *length 9 inches, signed Boucheron, London.*

US\$ 8,000-12,000





511

PROPERTY FROM A NEW YORK ESTATE

**Gold and Enamel Bracelet,
Schlumberger for Tiffany & Co., France**

Applied with red *paillonné* enamel, accented by fluted gold bars, leaves and cones, gross weight approximately 79 dwts, *internal circumference 6¼ inches, signed Schlumberger, Paris, with French workshop and assay marks.*

US\$ 10,000-15,000



512

PROPERTY FROM A NEW YORK ESTATE

**Diamond Clip-Brooch, Schlumberger for
Tiffany & Co., France**

Designed as a starfish, set with numerous round diamonds, accented by gold beads and links, *signed Schlumberger Tiffany & Co. Made in France, with French assay and partial workshop marks.*

US\$ 7,500-10,000



513

PROPERTY FROM A NEW YORK ESTATE

**Gold and Enamel Bracelet,
Schlumberger for Tiffany & Co., France**

Applied with blue *paillonné* enamel, accented by fluted gold bars, leaves and cones, gross weight approximately 81 dwts, *internal circumference 6¼ inches, signed Tiffany, Schlumberger, France, with French workshop and assay marks.*

US\$ 10,000-15,000

514

PROPERTY FROM A NEW YORK ESTATE

Gold Necklace, Fred, France

Composed of interlocking polished gold links, gross weight approximately 120 dwts, length 18½ inches, with maker's mark.

US\$ 7,500-10,000



515

PROPERTY FROM A NEW YORK ESTATE

Cultured Pearl and Diamond Ring, Schlumberger for Tiffany & Co.

Centering a cultured pearl measuring approximately 8.8 mm, framed and accented by smaller cultured pearls measuring approximately 4.7 mm and old mine-cut diamonds, size 5½, signed Schlumberger.

US\$ 5,000-7,000



516

PROPERTY FROM A NEW YORK ESTATE

Gold and Diamond Brooch, Tiffany & Co., Schlumberger Studios

The star-shaped brooch composed of overlapping polished gold segments, centering a cluster of numerous round diamonds, signed Tiffany & Co. Schlumberger Studios.

US\$ 4,000-6,000



517

PROPERTY OF A LADY

**Fancy Deep Pink Diamond and Colored
Diamond Clip-Brooch**

Of floral design, set at the center with an emerald-cut Fancy Deep Pink diamond weighing 1.05 carats, the petals pavé-set with round diamonds of pink hue.

Accompanied by GIA report no. 2185676750 stating that the 1.05 carat diamond is Fancy Deep Pink, I1 clarity.

Please note the round diamonds of pink hue have not been tested for natural origin of color.

US\$ 45,000-65,000



518

PROPERTY OF A LADY

Pair of Colored Diamond and Diamond Earclips

Of floral design, the petals pavé-set with round diamonds of purplish pink hue, the centers set with similarly-cut near colorless diamonds.

Accompanied by GIA report no. 2183680762 stating that the six stones tested at random are of natural color.

US\$ 8,000-12,000



519

PROPERTY OF A PRIVATE COLLECTOR

Diamond and Mother-of-Pearl 'Ocean Lady Moonphase' Wristwatch, Harry Winston

The dial of celestial design, inlaid with mother-of-pearl and pavé-set with single-cut diamonds, with moon-phase and date apertures, the bezel and lug ends set with round diamonds, on a white crocodile strap, quartz movement, *dial and caseback signed Harry Winston, numbered 047719, 222 and 400/UQMP36R, Swiss assay and maker's marks, together with 2 additional straps.*

Please note this property cannot be shipped internationally due to endangered species materials.

⦿ US\$ 10,000-15,000



△ 520

Coral Necklace

The five-strand necklace composed of elongated pink coral beads, completed by a stylized gold clasp, *length 21¾ inches, with Italian assay and registry marks.*

Please note this property cannot be shipped internationally due to endangered species materials.

⦿ US\$ 3,000-5,000



521



PROPERTY FROM AN ESTATE, NEW ORLEANS,
LOUISIANA

Diamond Ring

Set with a marquise-shaped diamond weighing 4.95 carats, accented by tapered baguette diamonds, size 5 $\frac{1}{4}$.

Accompanied by GIA report no. 1182638967 stating that the diamond is I color, VS1 clarity.

US\$ 30,000-50,000



522

PROPERTY FROM THE COLLECTION OF JOAN
OESTREICH KEND

Diamond Bracelet

The cluster-style bracelet of tapered design, centering an emerald-cut diamond, accented by round, baguette and marquise-shaped diamonds, length 6 $\frac{3}{4}$ inches.

US\$ 35,000-45,000



523

PROPERTY OF A PRIVATE COLLECTOR

Diamond and Emerald Clip-Brooch, Cartier

Of spray design, set with round diamonds and round and oval-shaped emeralds, embellished with scrolling ribbons set with baguette diamonds, *signed Cartier; circa 1992.*

US\$ 10,000-15,000

524

Pair of Emerald and Diamond Earrings

Suspending emerald drops measuring approximately 14.9 x 22.9 and 14.8 x 22.3 mm, the surmounts set with round and emerald-cut diamonds.

US\$ 50,000-75,000





525

PROPERTY OF A PRIVATE COLLECTOR

Diamond, Onyx and Gem-Set Bracelet

Composed of flexible panels depicting a sunset and dancing figures, set with numerous round diamonds, accented by cabochon onyx, ruby and sapphires and calibr -cut emeralds, length 7¼ inches.

US\$ 25,000-35,000



526

PROPERTY OF A VIRGINIA LADY

Onyx and Diamond Ring

Set with four old mine-cut diamonds, between lines of French-cut onyx, accented by single-cut diamonds, size 6¼; circa 1930s.

US\$ 20,000-30,000

527

PROPERTY FROM AN ESTATE, NEW YORK

Pair of Diamond and Onyx Earclips

Set with columns of old European-cut diamonds suspending swing-set drop-shaped pendants set with old European-cut diamonds and calibr -cut onyx.

US\$ 5,000-7,000



528

PROPERTY OF A PRIVATE COLLECTOR

Diamond and Emerald Wristwatch, Tiffany & Co.

The rectangular dial with Arabic numeral indicators and blue steel hands, completed by a bracelet, set with square-cut diamonds, accented by round and single-cut diamonds, further decorated with four triangle-shaped emeralds, mechanical movement, *length 6¼ inches, the dial signed Tiffany; circa 1925.*

US\$ 10,000-15,000



529

PROPERTY OF A VIRGINIA LADY

Diamond and Ruby Ring

Centering an old European-cut diamond weighing approximately 4.30 carats, bordered by French-cut rubies within a hexagonal frame, flanked by round diamonds, *size 5½.*

US\$ 15,000-20,000



530

PROPERTY OF A VIRGINIA LADY

Paraiba Tourmaline and Opal Ring

Set with an oval-shaped Paraiba tourmaline weighing 4.04 carats, framed by opal cabochons, size 5.

Accompanied by Gübelin report no. 0508603 dated August 25, 2005 stating that the Paraiba tourmaline is of Brazilian origin.

US\$ 40,000-60,000



531

PROPERTY OF A VIRGINIA LADY

Cultured Pearl and Diamond Sautoir

The tassel topped with single-cut diamonds, supporting cultured pearl fringes measuring approximately 3.3 to 2.0 mm, the necklace decorated with bezel-set round diamonds and cultured pearls measuring approximately 5.3 to 2.6 mm, *length 24 inches.*

US\$ 5,000-7,000



532

PROPERTY OF A LADY, PORTLAND, OREGON

Diamond Ring

Set with an old European-cut diamond weighing 3.39 carats, accented by single-cut diamonds, *size 7¼.*

Accompanied by GIA report no. 2185710770 stating that the diamond is J color, SI1 clarity.

US\$ 12,000-15,000



533

PROPERTY OF A VIRGINIA LADY

Jadeite and Diamond Ring

Centering a jadeite cabochon measuring approximately 19.5 x 7.8 x 4.3 mm, flanked by baguette diamonds, *size 5¾.*

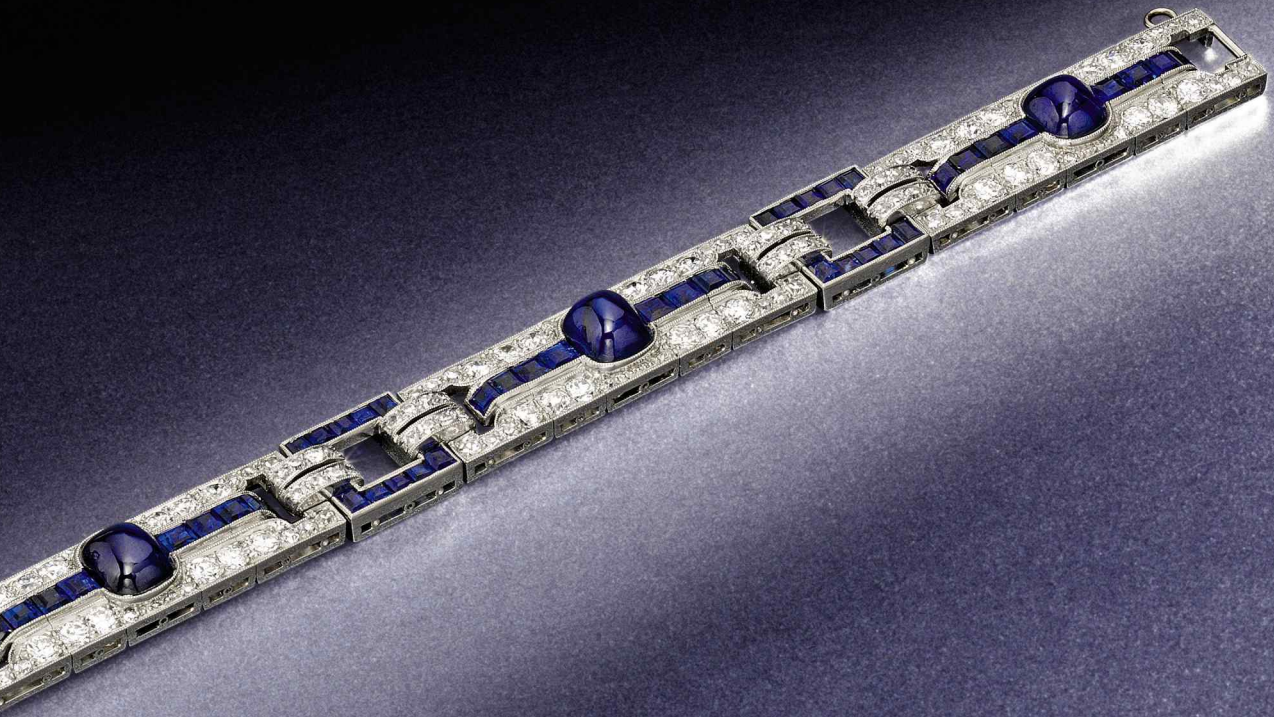
Accompanied by a Hong Kong Jade & Stone Lab Report no. SJ 22696 dated January 31, 2011 stating that the jadeite is natural, known in the trade as "A Jade."

US\$ 15,000-20,000





THIS PAGE
LOTS 376, 375 & 378





534

PROPERTY FROM A FLORIDA ESTATE

Diamond Necklace

Set at intervals with rose-cut diamonds, the front supporting graduated swags of bezel-set old European-cut diamonds, *length 15 inches*.

US\$ 7,000-9,000



535

PROPERTY FROM A FLORIDA ESTATE

Diamond Pendant-Brooch

The center of the bow set with an oval-shaped old mine-cut diamond weighing approximately 2.45 carats, surrounded by old mine-cut diamonds, suspending a detachable pear-shaped diamond weighing approximately 3.80 carats, framed by additional old mine and old European-cut diamonds; *late 19th century*.

US\$ 20,000-30,000



536

PROPERTY FROM A FLORIDA ESTATE

Sapphire, Enamel and Diamond Ring and Opal Ring, Marcus & Co.

One ring set with graduated oval-shaped sapphires within a blue enamel surround, accented by old European and old mine-cut diamonds, *size 7¼, signed Marcus & Co., circa 1900*; the other ring centering an oval-shaped cabochon opal measuring approximately 16.8 x 9.3 x 4.7 mm, *size 6¼, signed Marcus & Co., circa 1910*.

US\$ 7,000-9,000

PROPERTY FROM A FLORIDA ESTATE

LOTS 534–549

THIS COLLECTION CONTINUES WITH LOTS 233-239
IN THE MAGNIFICENT JEWELS SALE IN NEW YORK
ON DECEMBER 5, 2017

537

PROPERTY FROM A FLORIDA ESTATE

Pearl and Diamond Lariat Necklace, T. B. Starr

Composed of a chain of seed pearls, accented by three wreath motifs set with rose-cut diamonds, suspending two lines of single-cut diamonds terminating on a pair of drop-shaped pearls, length 15¼ inches, signed T.B. Starr.

Please note that the pearls have not been tested for natural origin.

US\$ 7,000-9,000



538

PROPERTY FROM A FLORIDA ESTATE

Cultured Pearl and Diamond Brooch

Set with seven button-shaped cultured pearls in various hues measuring approximately 6.4 to 5.6 mm, accented by old European-cut diamonds.

Accompanied by GIA report no. 1186732573 stating that the pearls are cultured, saltwater, with two pearls showing indications of treatment.

US\$ 5,000-7,000





539

PROPERTY FROM A FLORIDA ESTATE

Pair of Emerald and Diamond Pendant-Earclips

Suspending pear-shaped emeralds, framed and accented by numerous round and marquise-cut diamonds; *pendants detachable*.

US\$ 18,000-22,000



540

PROPERTY FROM A FLORIDA ESTATE

Emerald and Diamond Bracelet

Of geometric design, set with three marquise-shaped diamonds and numerous round diamonds, accented by calibré-cut emeralds, *length 7 inches; circa 1930*.

US\$ 10,000-15,000



541

PROPERTY FROM A FLORIDA ESTATE

Emerald and Diamond Ring

Centering an oval-shaped emerald cabochon measuring approximately 16.7 x 14.8 x 8.2 mm, framed by round diamonds, size 8.

Accompanied by AGL report no. 1087159 stating that the emerald is of Colombian origin, clarity enhancement: minor, type: traditional.

US\$ 20,000-30,000

542

PROPERTY FROM A FLORIDA ESTATE

Diamond and Emerald Bracelet

Of geometric design, set with numerous old European-cut diamonds, accented by square-cut emeralds, *length 7 $\frac{1}{8}$ inches.*

US\$ 12,000-15,000



543

PROPERTY FROM A FLORIDA ESTATE

Star Sapphire and Diamond Ring

Centering a cabochon star sapphire measuring approximately 28.0 x 19.6 x 19.0 mm, framed by round and marquise-shaped diamonds, *size 7, the top detaches for wear as a pendant.*

US\$ 15,000-20,000



544

PROPERTY FROM A FLORIDA ESTATE

Diamond Bracelet

Of buckle design, set with numerous round and baguette diamonds centering on a geometric motif further set with baguette and square-cut diamonds, *length 7 $\frac{1}{8}$ inches.*

US\$ 10,000-15,000





545

PROPERTY FROM A FLORIDA ESTATE

Sapphire and Diamond Ring

Centering a cushion-cut sapphire weighing 25.53 carats, surrounded by round and marquise-shaped diamonds set in a foliate design, size 9¼.

Accompanied by AGL report no. 1087154 stating that the sapphire is of Ceylon origin, with no indications of heating.

US\$ 15,000-20,000



546

PROPERTY FROM A FLORIDA ESTATE

Diamond and Pearl Bangle-Bracelet

Of hinged design, set with a pearl measuring approximately 9.7 mm, framed by old European-cut diamonds, accented by three rows of graduated old European and French-cut diamonds, *internal circumference 6½ inches.*

Please note that the pearl has not been tested for natural origin.

US\$ 7,000-9,000



547

PROPERTY FROM A FLORIDA ESTATE

Sapphire and Diamond Ring

Centering an oval-shaped sapphire measuring approximately 13.6 x 10.3 x 8.6 mm, framed by two tiers of pear-shaped sapphires, further accented by round diamonds, size 9¼, *the top detaches for wear as a pendant.*

Accompanied by AGL report no. 1087158 stating that the sapphire is of Ceylon origin, with no indications of heating.

US\$ 12,000-15,000

548

PROPERTY FROM A FLORIDA ESTATE

Diamond Longchain

Composed of numerous bezel-set old European-cut diamonds, *length 31 inches*.

US\$ 18,000-22,000



549

PROPERTY FROM A FLORIDA ESTATE

Ruby and Diamond Clip-Brooch

Designed as five slightly domed rows set with square and calibr -cut rubies, accented by round diamonds.

US\$ 7,500-10,000



550

PROPERTY FROM A FLORIDA ESTATE

Diamond Bracelet

The openwork design set with three emerald-cut diamonds, accented by numerous round, baguette and marquise-shaped diamonds, *length 7½ inches*.

US\$ 20,000-30,000





551

PROPERTY OF A PRIVATE COLLECTOR

Pair of Diamond and Colored Diamond Earrings, Moussaieff

The surmounts designed as graduated circles set with round black diamonds and diamonds of near colorless hue, suspending rotating hoops set on one side with round black diamonds and on the reverse with round diamonds of near colorless hue, embellished with a fringe of black and near colorless diamond briolettes, *signed Dorrit Moussaieff*. Fitted with retractable posts. With sterling silver presentation box and red leather case.

Please note the black diamonds have not been tested for natural origin of color.

US\$ 10,000-15,000



552

PROPERTY OF A VIRGINIA LADY

Pair of Colored Diamond and Diamond Cufflinks

Of star design, set with round diamonds on a background decorated with round black diamonds, *signed A.G.C.*

Please note the black diamonds have not been tested for natural origin of color.

US\$ 5,000-7,000



△ 553

Onyx and Coral Letter Opener and Tray, Seaman Schepps

Each carved from a single piece of onyx, the oval-shaped tray embellished with two coral cabochons, the letter opener decorated with a small coral branch, *letter opener measuring 8 x 1 x 1/2 inch, tray measuring 9 x 1 1/2 x 1/2 inch, each with maker's mark.*

Please note this property cannot be shipped internationally due to endangered species materials.

For objects of similar design see Seaman Schepps: a Century of New York Jewelry Design by Amanda Vail and Janet Zapata, page 200.

◎ **US\$ 2,000-3,000**

△ 554

Diamond Necklace, Judith Ripka

Composed of circular and quatrefoil-shaped links set with round diamonds, gross weight approximately 42 dwts, length 16 inches, signed *Judith Ripka*, one small diamond missing.

US\$ 4,000-6,000



555

PROPERTY OF A LADY

Diamond and Onyx 'Panthère' Ring, Cartier

The band set with numerous round diamonds, accented with buff-top onyx cabochons, signed *Cartier*, numbered 38915A. With signed box.

US\$ 10,000-15,000



556

PROPERTY OF A VIRGINIA LADY

Diamond Dress Set

Comprising a pair of cufflinks and four studs, the rectangular links set with square-cut diamonds, the edges accented by round diamonds.

US\$ 10,000-15,000





△ 557

Mabé Pearl Necklace, Tony Duquette

Composed of 14 variously-shaped mabé pearls, length 21 inches, signed *Tony Duquette*.

For a similar necklace see *Jewelry by Tony Duquette and Hutton Wilkinson*, page 50.

Please note this property cannot be shipped internationally due to endangered species materials.

◎ US\$ 15,000-20,000



558

PROPERTY FROM A DISTINGUISHED FAMILY

Gem-Set and Diamond 'Mediterranean Eden Sassi' Bracelet and Earclips, Bulgari

The bracelet composed of faceted amethysts, green quartz and citrines, spaced by round diamonds, length 7¼ inches; the earclips set with amethyst cabochons, topped by turquoise and amethyst beads, highlighted by round diamonds, signed *Bulgari*, earclips numbered *AGMVES*, all with Italian assay and registry marks. Fitted with posts.

US\$ 7,000-9,000

559

**Amethyst Necklace and Pair of Earclips,
Zolotas**

The necklace composed of 20 fluted amethyst beads alternating with hammered gold rondelles, length 18 inches, signed Zolotas; with earclips of similar design, signed Zolotas.

US\$ 15,000-20,000



△ 560

**Peridot and Diamond Clip-Brooch and
Earclips, Valentin Magro**

Of foliate design, set with variously-cut peridots and pavé-set round diamonds, the brooch suspending three peridot briolettes, each signed Valentin Magro.

US\$ 5,000-7,000





561

PROPERTY FROM A PRIVATE COLLECTION,
SAN FRANCISCO BAY AREA

**Gold and Enamel 'Croisillon' Bracelet
and Pair of Earclips, Tiffany & Co.,
Schlumberger Studios, France**

The bracelet applied with green pailonné enamel and gold x-shaped accents, gross weight approximately 60 dwts, *internal circumference 6¼ inches*; the earclips with dot motifs; *signed Tiffany & Co., Schlumberger Std., France.*

US\$ 12,000-15,000



562

PROPERTY FROM A PRIVATE COLLECTION,
SAN FRANCISCO BAY AREA

**Pair of Gold and Diamond Earclips,
Tiffany & Co., Schlumberger Studios**

The bombé designs set with round diamonds, with gold x-shaped accents, *signed Tiffany & Co., Schlumberger Studios.*

US\$ 7,000-9,000



563

PROPERTY FROM A PRIVATE COLLECTION,
SAN FRANCISCO BAY AREA

**Gold and Enamel 'Croisillon' Bracelet,
Tiffany & Co., Schlumberger Studios,
France**

Applied with green pailonné enamel, highlighted with gold x-shaped accents, gross weight approximately 60 dwts, *internal circumference 6½ inches*, *signed Tiffany & Co., Schlumberger Std., France.*

US\$ 8,000-12,000

564

PROPERTY FROM A PRIVATE COLLECTION,
SAN FRANCISCO BAY AREA

**Gold and Diamond Ring and Pair of
'Rope Six-Row' Earclips, Tiffany & Co.,
Schlumberger Studios**

The ring set with numerous round diamonds,
bordered by gold accents; the earclips composed
of gold ropetwist, highlighted by x-shaped
accents set with round diamonds, *signed Tiffany
& Co., Schlumberger Studios.*

US\$ 6,000-8,000



565

PROPERTY FROM A PRIVATE COLLECTION,
SAN FRANCISCO BAY AREA

**Diamond Bracelet, Oscar Heyman &
Brothers**

Composed of twisted gold segments set with
round and baguette diamonds, *with maker's
mark, numbered 820373, length 7 inches.*

US\$ 6,000-8,000



566

PROPERTY FROM A PRIVATE COLLECTION,
SAN FRANCISCO BAY AREA

**Diamond Ring and Pair of Earclips,
Oscar Heyman & Brothers**

The ring centering a pear-shaped diamond,
accented by numerous round and tapered
baguette diamonds; the earclips of similar design,
*all with maker's mark, the ring numbered 28504,
the earclips numbered 102270.*

US\$ 10,000-15,000



567



PROPERTY FROM A PRIVATE COLLECTION,
SAN FRANCISCO BAY AREA

Diamond Brooch, Tiffany & Co.

Of spray design, set with round and marquise-shaped diamonds, *signed Tiffany & Co.*

US\$ 8,000-12,000



568

PROPERTY FROM A PRIVATE COLLECTION,
SAN FRANCISCO BAY AREA

**Diamond 'Bellmodo' Clip-Brooch,
Tiffany & Co.**

Designed as a ribbon, set with numerous diamonds, *signed Tiffany; circa 1989.*

US\$ 5,000-7,000

569

Emerald and Diamond Necklace

Composed of alternating emerald beads and diamond briolettes, *length 34³/₈ inches*.

US\$ 20,000-30,000



570

PROPERTY FROM A DISTINGUISHED FAMILY

Diamond Bracelet

The bracelet designed as a line of round diamonds, *length 7¹/₄ inches, numbered 1298*.

US\$ 7,000-9,000



571

PROPERTY FROM AN ESTATE, NEW YORK

Pair of Diamond Pendant-Earclips

Of stylized foliate design, set with round, baguette, marquise and pear-shaped diamonds.

US\$ 5,000-7,000





THIS PAGE
LOTS 516 & 473



572

PROPERTY OF A DISTINGUISHED LADY

Pair of Diamond Studs, Asprey & Co.

Set with emerald-cut diamonds weighing 3.09 and 3.00 carats, *signed A & Co, with British hallmarks. With signed box.*

Accompanied by two GIA reports:

No. 20055685 dated December 16, 1996 stating that the diamond weighing 3.09 carats is F color, VS1 clarity.

No. 8720046 dated March 15, 1996 stating that the diamond weighing 3.00 carats is F color, VVS2 clarity.

US\$ 65,000-85,000



573

PROPERTY OF A LADY, TEXAS

Diamond Wristwatch, Piaget

The rectangular dial, bezel and bracelet set with numerous round diamonds, featuring blue steeled hands, quartz movement, length 6½ inches, the dial and caseback signed Piaget, the caseback numbered 83541 C 626, 415640.

US\$ 12,000-18,000



574

PROPERTY OF A LADY, TEXAS

Diamond Bracelet, Julius Cohen

Of straightline design, composed emerald-cut diamonds alternating with rows of baguette diamonds, length 7 inches, signed Julius Cohen.

US\$ 30,000-40,000



575

PROPERTY OF A LADY, TEXAS

Fancy Intense Yellow and Fancy Yellow Diamond Ring

Set with an emerald-cut Fancy Intense Yellow diamond weighing 4.13 carats and two emerald-cut Fancy Yellow diamonds weighing 4.37 and 3.83 carats, accented by tapered baguette diamonds of yellow hue, size 7.

Accompanied by three GIA reports:

No. 2181776124 stating that the diamond weighing 4.13 carats is Fancy Intense Yellow, Natural Color, VS1 clarity.

No. 2185776112 stating that the diamond weighing 4.37 carats is Fancy Yellow, Natural Color, VVS2 clarity.

No. 2185776249 stating that the diamond weighing 3.83 carats is Fancy Yellow, Natural Color, VS1 clarity.

Please note that the tapered baguette diamonds of yellow hue have not been tested for origin of color.

US\$ 40,000-60,000





576

PROPERTY FROM A NEW YORK PRIVATE
COLLECTION

Pair of Sapphire and Diamond Earclips

Of floral design, centering numerous round diamonds, accented by oval-shaped orange sapphires and cabochon blue sapphires; circa 1950.

US\$ 3,000-5,000



△ 577

**Pair of Diamond and Sapphire Earclips,
Valentin Magro**

Each set with a graduated line of sapphire cabochons, the borders with pavé-set round diamonds, *signed Valentin Magro*.

US\$ 4,000-6,000



△ 578

**Porcelain, Sapphire and Diamond
Clip-Brooch, David Webb**

Designed as a flower with a white porcelain blossom, topped with a bee, the body set with an oval-shaped sapphire, accented with round and single-cut diamonds, *signed Webb*.

US\$ 2,000-3,000

579

PROPERTY FROM A DISTINGUISHED FAMILY

Sapphire and Diamond Necklace and Pair of Earclips

The graduated diamond-set necklace centering three oval-shaped sapphires, the clasp set with an additional sapphire, *length 15½ inches*; the earclips of similar design, centering oval-shaped sapphires framed by round diamonds. Fitted with posts.

US\$ 20,000-30,000



580

Suite of Sapphire and Diamond Jewelry, Van Cleef & Arpels, France

Comprising a bracelet of gold foliate links accented by round sapphires, *length 7 inches, signed Van Cleef & Arpels, numbered 69544 B, with French assay and workshop marks*; a clip-brooch of floral design, *signed Van Cleef & Arpels, numbered 69596 B, with French assay and partial workshop mark*; a pair of floral earclips, *signed Van Cleef & Arpels, numbered B68976 and 4811.C.S., with French assay and workshop marks*; and a ring designed as a stylized foliate knot, *size 3¼, signed Van Cleef et Arpels, numbered 71038, with French assay and partial workshop marks*.

US\$ 8,000-10,000





581

PROPERTY FROM A DISTINGUISHED FAMILY

Emerald and Diamond Ring and Earclips, Giovane

The ring centering an oval-shaped emerald cabochon measuring approximately 17.1 x 12.5 x 8.8 mm, accented by round and baguette diamonds, size 8 $\frac{3}{4}$; the earclips similarly set with oval-shaped emerald cabochons measuring approximately 18.6 x 14.7 x 9.0 mm and 18.0 x 14.2 x 8.1 mm, accented by pear-shaped emerald cabochons and baguette diamonds, *all pieces signed Giovane, with Italian assay and registry marks.*

US\$ 12,000-15,000



△ 582

Pair of Diamond Earclips, Oscar Heyman & Brothers

Composed of a fringes set with round diamonds, fitted with posts, *numbered 702601, with maker's mark.*

US\$ 7,000-9,000



583

PROPERTY OF A LADY, HILLSBOROUGH, CA

Diamond Ring

Set with a round diamond weighing 4.41 carats, the split shank embellished with baguette diamonds, size 8 $\frac{3}{4}$.

Accompanied by GIA report no. 5182673469 stating that the diamond is K color, VS2 clarity.

US\$ 20,000-30,000

584

PROPERTY FROM THE COLLECTION OF FANNY GRUNBERG, NEW YORK, NEW YORK

Emerald and Diamond Pendant-Necklace

Suspending a pear-shaped emerald measuring approximately 20.1 x 14.0 x 10.8 mm, surrounded by round diamonds, the necklace composed of rectangular links set with numerous round diamonds, *length 16½ inches; pendant detachable.*

US\$ 45,000-65,000





△ 585

Diamond Necklace, Judith Ripka

Composed of embellished rectangular links, decorated with round diamonds, gross weight approximately 61 dwts, length 15¼ inches, signed Judith Ripka.

US\$ 6,000-8,000



586

PROPERTY FROM AN IMPORTANT PRIVATE COLLECTION, CONNECTICUT

Emerald and Diamond Ring

Centering an emerald-cut emerald weighing 9.58 carats framed by two rows of round diamonds, size 6½.

Accompanied by AGL report no. CS 70757 stating that the emerald is of Colombian origin, clarity enhancement: minor, type: traditional.

US\$ 15,000-20,000



△ 587

Pair of Diamond and Enamel Earclips, David Webb

The circular motifs applied with black enamel, accented by round diamonds, gross weight approximately 26 dwts, signed Webb.

US\$ 4,000-6,000

588

PROPERTY FROM THE COLLECTION OF JOAN
OESTREICH KEND

Gold 'Parentesi' Necklace and Earclips, Bulgari

The necklace composed of geometric links, gross weight approximately 134 dwts, length 16 inches, signed Bulgari, with maker's mark and Italian assay and registry marks; together with earrings of similar design, gross weight approximately 15 dwts, signed Bulgari, numbered BD 7112, stamped with Italian assay and registry marks.

US\$ 7,000-9,000



589

PROPERTY OF A DISTINGUISHED PRIVATE
COLLECTOR

Wood and Diamond Ring

Centering an emerald-cut diamond weighing 6.95 carats, within a wood mounting, size 5½.

Accompanied by GIA report no. 1182639211
stating that the diamond is N color, VS2 clarity.

Please note this property cannot be shipped
internationally due to endangered species
materials.

● US\$ 15,000-20,000



△ 590

Pair of Mother-of-Pearl and Black Jade Earclips, Angela Cummings for Tiffany & Co.

The square-shaped designs inlaid with scalloped
mother-of-pearl and black jade motifs, signed
T & Co.

Please note this property cannot be shipped
internationally due to endangered species
materials.

● US\$ 2,000-3,000





591

PROPERTY FROM A DISTINGUISHED FAMILY

Diamond and Ruby Necklace

Of graduated design, set with round and marquise-shaped diamonds, accented by round and oval-shaped rubies, gathered in a bow motif at the clasp, *internal circumference 15½ inches*.

US\$ 20,000-30,000



592

PROPERTY OF A MIDWESTERN COLLECTOR

Gold and Diamond Clip-Brooch, France

Designed as a flower, the articulated petals composed of gold mesh, the pistils set *en tremblant* with round diamonds, gross weight approximately 17 dwts, with *French export and workshop marks*.

US\$ 5,000-7,000



593

PROPERTY FROM AN ESTATE, NEW YORK

Diamond and Ruby Ring

The textured gold mount set with an emerald-cut diamond, accented by calibr -cut rubies and baguette diamonds, size 5.

US\$ 6,000-8,000

△ 594

Ruby Necklace, Tony Duquette

Composed of two strands of alternating fluted ruby and gold foiled beads, the clasp in the form of an ancient Greek mask, suspending a detachable cabochon ruby pendant, *length 18 inches, signed Tony Duquette.*

US\$ 2,000-3,000



595

Enamel, Diamond and Ruby Ring, David Webb

Designed as a coiled snake, the scales applied with white enamel, accented with cabochon rubies and round diamonds, *size 5½, signed David Webb.*

US\$ 12,000-15,000



△ 596

Pair of Diamond and Ruby Earclips, Oscar Heyman & Brothers

Of bombé form, set with round diamonds and calibré-cut rubies, *numbered 702830, with maker's mark.*

US\$ 2,500-3,500





597

PROPERTY OF A LADY

**Colored Stone and Diamond Necklace,
Tiffany & Co.**

The multi-strand necklace composed of numerous faceted colored stone beads measuring approximately 7.1 to 2.5 mm, completed by a clasp set with baguette diamonds, *length 15½ inches, signed Tiffany & Co., numbered 18507455.*

Accompanied by GIA report no. 5161931387 stating that seven beads tested at random are natural spinel.

US\$ 10,000-15,000



598

**Rubellite, Sapphire and Diamond Ring,
Sifen Chang**

Set with an oval-shaped rubellite cabochon weighing 29.73 carats, within a surround of round diamonds, accented by rose-cut sapphires, size 6, *signed Sifen Chang in Chinese characters.*

US\$ 8,000-12,000



△ 599

**Gem-Set and Diamond Clip-Brooch,
Tony Duquette**

Designed as a stylized insect with carved pink tourmaline wings, an aquamarine head and round diamond antennae, with cabochon moonstones and oval-shaped apatite accents, gross weight approximately 64 dwts, *signed Tony Duquette.*

US\$ 10,000-15,000

600

PROPERTY OF A LADY

Three Amethyst, Coral and Gold Necklaces, David Webb

Composed of round amethyst beads accented with fluted amethyst beads, round coral beads and textured gold beads, *lengths measuring 24, 25 and 26 inches, all three signed Webb.*

Please note this property cannot be shipped internationally due to endangered species materials.

© US\$ 8,000-12,000



△ 601

Multi-Colored Sapphire and Ruby Bracelet, Tony Duquette

The wide band composed of carved blue, pink, yellow and white sapphires, and ruby leaves, accented with violet, purple and similarly colored round, oval and pear-shaped sapphires, *gross weight approximately 173 dwts, length 7 inches, signed Tony Duquette.*

US\$ 15,000-20,000





602

Gold Necklace, David Webb

Composed of hammered gold fancy-shaped links suspending a kite-shaped pendant, gross weight approximately 203 dwts, *signed Webb*.

US\$ 25,000-35,000



△ 603

Pair of Gold Earclips, David Webb

Designed as fluted hammered gold hoops, gross weight approximately 32 dwts, *signed Webb*.

US\$ 2,000-3,000



△ 604

Diamond Pendant-Brooch, David Webb

The Maltese cross composed of gold ropetwist, set with round diamonds, gross weight approximately 47 dwts, *signed David Webb*; fitted with pendant hook.

US\$ 10,000-15,000

605

Gold Bangle-Bracelet, David Webb

Of hinged design, the wide hammered gold bangle embellished with navette-shaped motifs, gross weight approximately 106 dwts, *internal circumference 6½ inches, signed David Webb.*

US\$ 20,000-30,000



606

PROPERTY OF A NEW YORK CITY LADY

Gold, Enamel, Diamond and Emerald Brooch, David Webb

Designed as a dragon, the body applied with black enamel, accented by round and single-cut diamonds, the eye set with a pear-shaped emerald cabochon, *signed Webb.*

US\$ 15,000-20,000



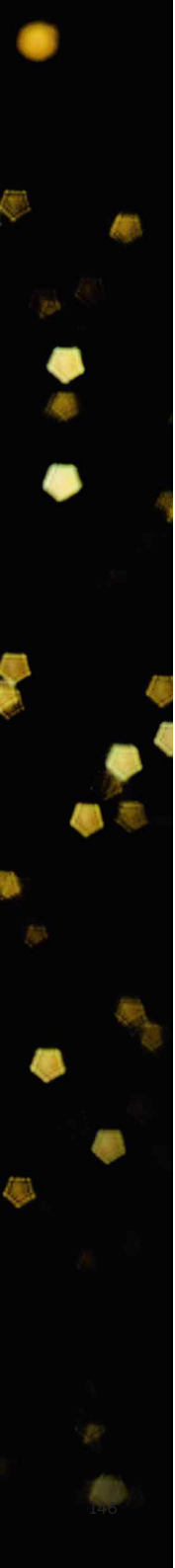
△ 607

Carnelian and Diamond Ring, David Webb

The carnelian cabochon framed by round diamonds, within a textured gold architectural mounting, *size 5 ½, signed Webb.*

US\$ 1,500-2,000





608

PROPERTY FROM AN ESTATE, NEW YORK

Diamond Ring

Centering an emerald-cut diamond weighing 5.69 carats, accented by tapered baguette diamonds, size 6¾.

Accompanied by GIA report no. 5181622184 stating that the diamond is I color, VS1 clarity.

US\$ 40,000-60,000

609

PROPERTY OF A PRIVATE COLLECTOR

Sapphire and Diamond Longchain

Bezel-set with round sapphires and diamonds, length 92 inches.

US\$ 30,000-50,000



610

PROPERTY OF A PRIVATE COLLECTOR

Diamond Band Ring, Harry Winston

Composed of a full circle of round diamonds, size 7 $\frac{1}{4}$, numbered 148152, with maker's mark.

US\$ 8,000-12,000



△ 611

Ruby, Sapphire and Diamond Brooch, Harry Winston

Designed as a ribbon, set with round rubies, sapphires, and diamonds, accented by baguette diamonds, numbered 68942, with maker's mark.

US\$ 2,000-3,000





△ 612

**Tourmaline and Citrine Necklace,
Tony Duquette**

The graduated fringe composed of emerald-cut and mixed-cut citrines, accented by baguette and emerald-cut bi-colored and green tourmalines, length 16¾ inches, signed Tony Duquette.

LITERATURE

For an image of this necklace: *Jewelry by Tony Duquette and Hutton Wilkinson*, page 114.

US\$ 25,000-35,000



613

PROPERTY FROM A NEW YORK PRIVATE
COLLECTION

**Pair of Coral and Diamond 'Rose de
Noël' Earclips, Van Cleef & Arpels,
France**

Of floral design, the petals composed of carved white coral, the pistils set with round diamonds, signed Van Cleef & Arpels, Made in France, numbered 3V 487-48, with French assay and maker's marks. With signed box.

Please note this property cannot be shipped internationally due to endangered species materials.

● **US\$ 8,000-12,000**

614

PROPERTY OF AN IMPORTANT PRIVATE
COLLECTION

**Gold and Diamond Necklace,
Van Cleef & Arpels, France**

Composed of textured gold oval-shaped links
embellished with round diamonds, gross weight
approximately 150 dwts, *internal circumference*
13½ inches, signed Van Cleef & Arpels, numbered
26786, with French assay and workshop mark.

US\$ 20,000-30,000



615

PROPERTY OF A LADY

Pair of Coral and Diamond Earclips

Each top set with round diamonds supporting
three articulated rows of coral cabochons
embellished further with round diamonds.

*Please note this property cannot be shipped
internationally due to endangered species
materials.*

◎ **US\$ 12,000-18,000**



End of Sale



Sotheby's EST. 1744

Collectors gather here.

**Masterworks by Tiffany Studios:
The William A. Richardson
Collection**

**Auction New York
13 December 2017**

A selection of leaded glass
lighting, estimates ranging from
\$40,000 to 300,000

Viewing 9 – 12 December

1334 YORK AVENUE, NEW YORK, NY 10021

ENQUIRIES +1 212 606 7170
20THCENTURYDESIGN@SOTHEBYS.COM
SOTHEBYS.COM/DESIGN

DOWNLOAD SOTHEBY'S APP
FOLLOW US @SOTHEBYS
#SOTHEBYSDESIGN



Sotheby's EST. 1744

Collectors gather here.

**New York
Auction Calendar**

Finest & Rarest Wines
Auction 2 December

**Couture Fashion Jewellery:
The Personal Archive
of Shaun Leane**
Auction 4 December

Magnificent Jewels
Auction 5 December

Important Watches
Auction 6 December

RM Sotheby's Icons
Auction 6 December

Fine Jewels
Auction 7 December

**Experience Art & Culture:
An Online Benefit Auction**
27 November–8 December

**Erik Madigan Heck:
Old Future**
Selling Exhibition

a **LIFE of LUXURY**

#LIFEofLUXURY

Viewing 30 November–7 December

1334 YORK AVENUE, NEW YORK, NY 10021

ENQUIRIES +1 212 606 7280
SOTHEBYS.COM/LIFEofLUXURY

© PHOTOGRAPHY: HENRIQUE GENDRE

DOWNLOAD SOTHEBY'S APP
FOLLOW US @SOTHEBYS





ANDY WARHOL. \$(4), 1982

TREASURE THE ART.
UNLOCK THE VALUE.

As the art market reaches new heights, it is time to look at your art in a new light.

Sotheby's Financial Services allows you to enjoy your investment in fine art, decorative art or jewellery with renewed liquidity, capitalising on its value while maintaining ownership.

With over 25 years of experience in art lending, more than \$4 billion in loans made to date, and in-depth knowledge of the international art market, we can arrange truly bespoke financing solutions for our clients.

Comprehensive valuations from renowned specialists combined with unparalleled market expertise enable us to offer loans discreetly and with unmatched speed.

Contact us for a confidential consultation today.

Enquiries

New York +1 212 894 1130
Londres +44 (0) 207 293 6006
Hong Kong +852 2822 8188
services@sothebysfinancial.com
sothebysfinancial.com

Sotheby's EST. 1744

Financial Services

CONDITIONS OF SALE

The following Conditions of Sale and Terms of Guarantee are Sotheby's, Inc. and the Consignor's entire agreement with the purchaser and any bidders relative to the property listed in this catalogue.

The Conditions of Sale, Terms of Guarantee, the glossary, if any, and all other contents of this catalogue are subject to amendment by us by the posting of notices or by oral announcements made during the sale. The property will be offered by us as agent for the Consignor, unless the catalogue indicates otherwise.

By participating in any sale, you acknowledge that you are bound by these terms and conditions.

1. **As Is** Goods auctioned are often of some age. The authenticity of the Authorship (as defined below) of property listed in the catalogue is guaranteed as stated in the Terms of Guarantee and except for the Limited Warranty contained therein, all property is sold "AS IS" without any representations or warranties by us or the Consignor as to merchantability, fitness for a particular purpose, the correctness of the catalogue or other description of the physical condition, size, quality, rarity, importance, medium, frame, provenance, exhibitions, literature or historical relevance of any property and no statement anywhere, whether oral or written, whether made in the catalogue, an advertisement, a bill of sale, a salesroom posting or announcement, or elsewhere, shall be deemed such a warranty, representation or assumption of liability. We and the Consignor make no representations and warranties, express or implied, as to whether the purchaser acquires any copyrights, including but not limited to, any reproduction rights in any property. We and the Consignor are not responsible for errors and omissions in the catalogue, glossary, or any supplemental material. Sotheby's will not be responsible or liable for damage to frames and glass coverings, regardless of the cause.

2. **Inspection** Prospective bidders should inspect the property before bidding to determine its condition, size, and whether or not it has been repaired or restored.

3. **Buyer's Premium** A buyer's premium will be added to the hammer price and is payable by the purchaser as part of the total purchase price. The buyer's premium is 25% of the hammer price up to and including \$300,000, 20% of any amount in excess of \$300,000 up to and including \$3,000,000, and 12.9% of any amount in excess of \$3,000,000.

4. **Withdrawal** We reserve the right to withdraw any property before the sale and shall have no liability whatsoever for such withdrawal.

5. **Per Lot** Unless otherwise announced by the auctioneer, all bids are per lot as numbered in the catalogue.

6. **Bidding** We reserve the right to reject any bid. The highest bidder acknowledged by the auctioneer will be the purchaser. The auctioneer has absolute and sole discretion in the case of error or dispute with respect to bidding, and whether during or after the sale, to determine the successful bidder, to re-open the bidding, to cancel the sale or to re-offer and re-sell the item in dispute. If any dispute arises after the sale, our sale record is conclusive. In our discretion we will execute order or absentee bids and accept telephone bids and online bids via BIDnow, eBay, Invaluable or other online platforms as a convenience to clients who are not present at auctions; Sotheby's is not responsible for any errors or omissions in connection therewith. Prospective bidders should also consult sothebys.com for the most up to date cataloguing of the property in this catalogue.

By participating in the sale, you represent and warrant that any bids placed by you, or on your behalf, are not the product of any collusive or other anti-competitive agreement and are otherwise consistent with federal and state antitrust law.

In order to bid on "Premium Lots" you must complete the required Premium Lot pre-registra-

tion application. Sotheby's decision whether to accept any pre-registration application shall be final. You must arrange for Sotheby's to receive your pre-registration application at least three working days before the sale. Please bear in mind that we are unable to obtain financial references over weekends or public holidays.

Sotheby's may require such necessary financial references, guarantees, deposits and/or such other security, in its absolute discretion, as security for your bid(s).

7. **Online Bids via BIDnow or other Online Platforms:** Sotheby's may offer clients the opportunity to bid online via BIDnow, eBay, Invaluable or other Online Platforms for selected sales. By participating in a sale via any of these Online Platforms, you acknowledge that you are bound by these Conditions of Sale as well as the Additional Terms and Conditions for Live Online Bidding ("Online Terms"). By participating in a sale via any Online Platform, Bidders accept the Online Terms, as well as the relevant Conditions of Sale. Online bidding may not be available for Premium Lots.

8. **Bids Below Reserve** If the auctioneer determines that any opening bid is below the reserve of the article offered, he may reject the same and withdraw the article from sale, and if, having acknowledged an opening bid, he determines that any advance thereafter is insufficient, he may reject the advance.

9. **Purchaser's Responsibility** Subject to fulfillment of all of the conditions set forth herein, on the fall of the auctioneer's hammer, the contract between the consignor and the purchaser is concluded, and the winning bidder thereupon will immediately pay the full purchase price or such part as we may require. Title in a purchased lot will not pass until Sotheby's has received the full purchase price in cleared funds. The purchaser's obligation to immediately pay the full purchase price or such part as we may require is absolute and unconditional and is not subject to any defenses, setoffs or counterclaims of any

kind whatsoever. Sotheby's is not obligated to release a lot to the purchaser until title to the lot has passed and any earlier release does not affect the passing of title or the purchaser's unconditional obligation to pay the full purchase price. In addition to other remedies available to us by law, we reserve the right to impose from the date of sale a late charge of the annual percentage rate of Prime + 6% of the total purchase price if payment is not made in accordance with the conditions set forth herein. Please note Sotheby's reserves the right to refuse to accept payment from a source other than the buyer of record.

Unless otherwise agreed by Sotheby's, all property must be removed from our premises by the purchaser at his expense not later than 30 calendar days following its sale. Buyers are reminded that Sotheby's liability for loss or damage to sold property shall cease no later than 30 calendar days after the date of the auction. If any applicable conditions herein are not complied with by the purchaser, the purchaser will be in default and in addition to any and all other remedies available to us and the Consignor by law, including, without limitation, the right to hold the purchaser liable for the total purchase price, including all fees, charges and expenses more fully set forth herein, we, at our option, may (x) cancel the sale of that, or any other lot or lots sold to the defaulting purchaser at the same or any other auction, retaining as liquidated damages all payments made by the purchaser, or (y) resell the purchased property, whether at public auction or by private sale, or (z) effect any combination thereof. In any case, the purchaser will be liable for any deficiency, any and all costs, handling charges, late charges, expenses of both sales, our commissions on both sales at our regular rates, legal fees and expenses, collection fees and incidental damages. We may, in our sole discretion, apply any proceeds of sale then due or thereafter becoming due to the purchaser from us or any affiliated company, or any payment made by the purchaser to us or any affiliated company, whether or not intended to reduce the purchaser's obligations with respect to the

unpaid lot or lots, to the deficiency and any other amounts due to us or any affiliated companies. In addition, a defaulting purchaser will be deemed to have granted and assigned to us and our affiliated companies, a continuing security interest of first priority in any property or money of or owing to such purchaser in our possession, custody or control or in the possession, custody or control of any of our affiliated companies, in each case whether at the time of the auction, the default or if acquired at any time thereafter, and we may retain and apply such property or money as collateral security for the obligations due to us or to any affiliated company of ours. We shall have all of the rights accorded a secured party under the New York Uniform Commercial Code. You hereby agree that Sotheby's may file financing statements under the New York Uniform Commercial Code without your signature. Payment will not be deemed to have been made in full until we have collected good funds. Any claims relating to any purchase, including any claims under the Conditions of Sale or Terms of Guarantee, must be presented directly to Sotheby's. In the event the purchaser fails to pay any or all of the total purchase price for any lot and Sotheby's nonetheless elects to pay the Consignor any portion of the sale proceeds, the purchaser acknowledges that Sotheby's shall have all of the rights of the Consignor to pursue the purchaser for any amounts paid to the Consignor, whether at law, in equity, or under these Conditions of Sale.

10. Reserve All lots in this catalogue are offered subject to a reserve, which is the confidential minimum hammer price at which a lot will be sold. No reserve will exceed the low presale estimate stated in the catalogue, or as amended by oral or posted notices. We may implement such reserve by opening the bidding on behalf of the Consignor and may bid up to the amount of the reserve, by placing successive or consecutive bids for a lot, or bids in response to other bidders. In instances where we have an interest in the lot other than our commission, we may bid up to the reserve to protect such interest. In

certain instances, the Consignor may pay us less than the standard commission rate where a lot is "bought-in" to protect its reserve.

11. Tax Unless exempted by law, the purchaser will be required to pay the combined New York State and local sales tax, any applicable compensating use tax of another state, and if applicable, any federal luxury or other tax, on the total purchase price. The rate of such combined tax is 8.875% in New York City and ranges from 7% to 8.625% elsewhere in New York.

12. Export and Permits It is the purchaser's sole responsibility to identify and obtain any necessary export, import, firearm, endangered species or other permit for the lot. Any symbols or notices in the sale catalogue reflect Sotheby's reasonable opinion at the time of cataloguing and are for bidders' general guidance only; Sotheby's and the Consignor make no representations or warranties as to whether any lot is or is not subject to export or import restrictions or any embargoes.

13. Governing Law and Jurisdiction These Conditions of Sale and Terms of Guarantee, as well as bidders', the purchaser's and our respective rights and obligations hereunder, shall be governed by and construed and enforced in accordance with the laws of the State of New York. By bidding at an auction, whether present in person or by agent, order bid, telephone, online or other means, all bidders including the purchaser, shall be deemed to have consented to the exclusive jurisdiction of the state courts of, and the federal courts sitting in, the State of New York. All parties agree, however, that Sotheby's shall retain the right to bring proceedings in a court other than the state and federal courts sitting in the State of New York.

14. Packing and Shipping We are not responsible for the acts or omissions in our packing or shipping of purchased lots or of other carriers or packers of purchased lots, whether or not recommended by us. Packing and handling of purchased lots is at the entire risk of the purchaser.

15. Limitation of Liability In no event will our liability to a purchaser exceed the purchase price actually paid.

16. Data Protection Sotheby's will use information provided by its clients (or which Sotheby's otherwise obtains from eBay, Invaluable or other sources relating to its clients) for the provision of auction and other art-related services, loan services, client administration, marketing and otherwise to manage and operate its business, or as required by law, in accordance with Sotheby's Privacy Policy. This will include information such as the client's name and contact details, proof of identity, financial information, records of the client's transactions, and preferences. Some gathering of information about Sotheby's clients will take place using technical means to identify their preferences in order to provide a higher quality of service to them. Sotheby's may also disclose the client information to other Sotheby's Companies and/or third parties acting on their behalf to provide services for these purposes.

Sometimes, Sotheby's may also disclose this information to carefully selected third parties for their own marketing purposes. If you do not wish your details to be used for this purpose, please email enquiries@sothebys.com.

If the client provides Sotheby's with information that is defined by European data protection laws as "sensitive", the client agrees that it may be used for the purposes set out above.

In the course of these disclosures, personal data collected in the European Economic Area may be disclosed to countries outside the European Economic Area. Although such countries may not have legislation that protects a client's personal information, Sotheby's shall take great care to keep such information secure and in accordance with European data protection principles. By agreeing to these Conditions of Sale, the client is agreeing to such disclosure.

Please be aware that Sotheby's may film auctions or other activities on Sotheby's premises and that such recordings may be transmitted

over the Internet via Sotheby's website, the eBay website, the Invaluable website and other Online Platforms. Telephone bids may be recorded.

Under European data protection laws, a client may object, by request and free of charge, to the processing of their information for certain purposes, including direct marketing, and may access and rectify personal data relating to them and may obtain more information about Sotheby's data protection policies by writing to Sotheby's, 34-35 New Bond Street, London W1A 2AA, or 1334 York Avenue, New York, NY 10021, Attn: Compliance, or emailing enquiries@sothebys.com. Sotheby's use of information collected about eBay users may differ and is governed by the terms of the eBay Privacy Policy and Sotheby's on eBay Live Auction Platform Privacy Policy, which can be found on the Sotheby's on eBay Live Auction Website. Sotheby's use of information collected about Invaluable users may differ and is governed by the terms of the Invaluable Privacy Policy and Sotheby's on Invaluable Online Platform Privacy Policy, which can be found on the Sotheby's on Invaluable Live Auction Website.

TERMS OF GUARANTEE

As set forth below and in the Conditions of Sale, for all lots Sotheby's guarantees that the authorship, period, culture or origin (collectively, "Authorship") of each lot in this catalogue is as set out in the **BOLD** or **CAPITALIZED** type heading in the catalogue description of the lot, as amended by oral or written salesroom notes or announcements. Purchasers should refer to the Glossary of Terms, if any, for an explanation of the terminology used in the **Bold** or **Capitalized** type heading and the extent of the Guarantee. Sotheby's makes no warranties whatsoever, whether express or implied, with respect to any material in the catalogue other than that appearing in the **Bold** or **Capitalized** heading and subject to the exclusions below.

In the event Sotheby's in its reasonable opinion deems that the conditions of the Guarantee have been satisfied, it shall refund to the original purchaser of record the hammer price and applicable Buyer's Premium paid for the lot by the original purchaser of record.

This Guarantee is provided for a period of five (5) years from the date of the relevant auction, is solely for the benefit of the original purchaser of record at the auction and may not be transferred to any third party. To be able to claim under this Guarantee of Authorship, the original purchaser of record must: (i) notify Sotheby's in writing within three (3) months of receiving any information that causes the original purchaser of record to question the accuracy of the Bold or Capitalized type heading, specifying the lot number, date of the auction at which it was purchased and the reasons for such question; and (ii) return the Lot to Sotheby's at the original selling location in the same condition as at the date of sale to the original purchaser of record and be able to transfer good title to the Lot, free from any third party claims arising after the date of such sale.

Sotheby's has discretion to waive any of the above requirements. Sotheby's may require the original purchaser of record to obtain at the original purchaser of record's cost the reports of two independent and recognized experts in the field, mutually acceptable to Sotheby's and the original purchaser of record. Sotheby's shall not be bound by any reports produced by the original purchaser of record, and reserves the right to seek additional expert advice at its own expense. It is specifically understood and agreed that the rescission of a sale and the refund of the original purchase price paid (the successful hammer price, plus the buyer's premium) is exclusive and in lieu of any other remedy which might otherwise be available as a matter of law, or in equity. Sotheby's and the Consignor shall not be liable for any incidental or consequential damages incurred or claimed, including without limitation, loss of profits or interest.

ADDITIONAL TERMS AND CONDITIONS FOR LIVE ONLINE BIDDING

The following terms and conditions (the "Online Terms") provide important information related to live online bidding via BIDnow, eBay, Invaluable, and any other Online Platform through which bidding is made available ("Online Platforms").

These Conditions are in addition to and subject to the same law and our standard terms and conditions of sale, including the authenticity guarantee and any other terms and are not intended in any way to replace them. By participating in this sale via any Online Platform, you acknowledge that you are bound by the Conditions of Sale applicable in the relevant sale and by these additional Conditions.

1. The procedure for placing bids via Online Platforms is a one-step process; as soon as the "Bid Now" button is clicked, a bid is submitted. By placing a bid via any Online Platform, you accept and agree that bids submitted in this way are final and that you will not under any circumstances be permitted to amend or retract your bid. If a successful bid is sent to Sotheby's from your computer, phone, tablet, or any other device, you irrevocably agree to pay the full purchase price, including buyer's premium and all applicable taxes and other applicable charges.
2. If you have the leading bid, it will be indicated on the screen with the statement "Bid with you" (on BIDNow) or "You're the highest bidder" (on eBay) or "Bid with you" (on Invaluable). If a bid is placed online simultaneously with a bid placed by a bidder in the room or on the telephone (a "floor" bid), the "floor" bid generally will take precedence; the auctioneer will have the final discretion to determine the successful bidder or to reopen bidding. The auctioneer's decision is final.

3. The next bidding increment is shown on the screen for your convenience. The auctioneer has discretion to vary bidding increments for bidders in the auction room and on the telephones, but bidders using Online Platforms may not be able to place a bid in an amount other than a whole bidding increment. All bidding for this sale will be in the domestic currency of the sale location, and online bidders will not be able to see the currency conversion board that may be displayed in the auction room.

4. The record of sale kept by Sotheby's will be taken as absolute and final in all disputes. In the event of a discrepancy between any online records or messages provided to you and the record of sale kept by Sotheby's, the record of sale will govern.

5. Online bidders are responsible for making themselves aware of all saleroom notices and announcements. All saleroom notices will be read by the auctioneer at the beginning, where appropriate, or during the sale prior to a relevant lot being offered for sale. Sotheby's recommends that online bidders log on at least ten minutes before the scheduled start of the auction to ensure that you have heard all announcements made by the auctioneer at the beginning of the sale.

6. Sotheby's reserves the right to refuse or revoke permission to bid via Online Platforms and to remove bidding privileges during a sale.

7. Purchase information shown in the "Account Activity" section of BIDnow, the "Purchase History" section of the "My eBay" page on eBay and the "Account Activity" section of the "My Invaluable" page on Invaluable is provided for your convenience only. Successful bidders will be notified and invoiced by Sotheby's after the sale. In the event of any discrepancy between any online purchase information and the invoice sent to you by Sotheby's following the respective sale, the invoice prevails. Terms and conditions for payment and collection of property remain the

same regardless of how the winning bid was submitted.

8. Sotheby's offers online bidding as a convenience to our clients. Sotheby's will not be responsible for any errors or failures to execute bids placed via Online Platforms, including, without limitation, errors or failures caused by (i) a loss of connection to the internet or to the BIDnow, eBay, Invaluable or other Online Platform software by either Sotheby's or the client; (ii) a breakdown or problem with the BIDnow, eBay, Invaluable or other Online Platform software; or (iii) a breakdown or problem with a client's internet connection, mobile network or computer. Sotheby's is not responsible for any failure to execute an online bid or for any errors or omissions in connection therewith.

9. Live online bidding via all Online Platforms will be recorded.

10. In the event of any conflict between these Online Terms and Sotheby's Conditions of Sale and Terms of Guarantee, Sotheby's Conditions of Sale and Terms of Guarantee will control.

11. In the event of any conflict between these Online Terms and any term in any agreement between the User and eBay, these Online Terms will control for purposes of all Sotheby's auctions.

12. In the event of any conflict between these Online Terms and any term in any agreement between the User and Invaluable, these Online Terms will control for purposes of all Sotheby's auctions.

BUYING AT AUCTION

The following will help in understanding the auction buying process as well as some of the terms and symbols commonly used in an auction catalogue. All bidders should read the Conditions of Sale and Terms of Guarantee in this catalogue, as well as the Glossary or any other notices. By bidding at auction, bidders are bound by the Conditions of Sale and Terms

of Guarantee, as amended by any oral announcement or posted notices, which together form the sale contract among Sotheby's, the seller (consignor) of the lot and any bidders, including the successful bidder (purchaser).

1. SYMBOL KEY

☐ Reserves

Unless indicated by a box (☐), all lots in this catalogue are offered subject to a reserve. A reserve is the confidential minimum hammer price at which a lot will be sold. The reserve is generally set at a percentage of the low estimate and will not exceed the low estimate of the lot. If any lots in the catalogue are offered without reserve, such lots will be designated by a box (☐). If every lot in a catalogue is offered without a reserve, the Conditions of Sale will so state and this symbol will not be used for each lot.

○ Guaranteed Property

The seller of lots with this symbol has been guaranteed a minimum price from one auction or a series of auctions. This guarantee may be provided by Sotheby's or jointly by Sotheby's and a third party. Sotheby's and any third parties providing a guarantee jointly with Sotheby's benefit financially if a guaranteed lot is sold successfully and may incur a loss if the sale is not successful. If the Guaranteed Property symbol for a lot is not included in the printing of the auction catalogue, a pre-sale or pre-lot announcement will be made indicating that there is a guarantee on the lot.

△ Property in which Sotheby's has an Ownership Interest

Lots with this symbol indicate that Sotheby's owns the lot in whole or in part or has an economic interest in the lot equivalent to an ownership interest.

⇒ Irrevocable Bids

Lots with this symbol indicate that a party has provided Sotheby's with an irrevocable bid on the lot that will be executed during the sale at a value that ensures that the lot will sell. The irrevocable bidder, who may bid in excess of the irrevocable bid, may be compensated for providing the irrevocable bid by

receiving a contingent fee, a fixed fee or both. If the irrevocable bidder is the successful bidder, any contingent fee, fixed fee or both (as applicable) for providing the irrevocable bid may be netted against the irrevocable bidder's obligation to pay the full purchase price for the lot and the purchase price reported for the lot shall be net of any such fees. If the irrevocable bid is not secured until after the printing of the auction catalogue, Sotheby's will notify bidders that there is an irrevocable bid on the lot by one or more of the following means: a pre-sale or pre-lot announcement, by written notice at the auction or by including an irrevocable bid symbol in the e-catalogue for the sale prior to the auction. If the irrevocable bidder is advising anyone with respect to the lot, Sotheby's requires the irrevocable bidder to disclose his or her financial interest in the lot. If an agent is advising you or bidding on your behalf with respect to a lot identified as being subject to an irrevocable bid, you should request that the agent disclose whether or not he or she has a financial interest in the lot.

√ Interested Parties

Lots with this symbol indicate that parties with a direct or indirect interest in the lot may be bidding on the lot, including (i) the beneficiary of an estate selling the lot, or (ii) the joint owner of a lot. If the interested party is the successful bidder, they will be required to pay the full Buyer's Premium. In certain instances, interested parties may have knowledge of the reserve. In the event the interested party's possible participation in the sale is not known until after the printing of the auction catalogue, a pre-sale or pre-lot announcement will be made indicating that interested parties may be bidding on the lot.

◎ Restricted Materials

Lots with this symbol have been identified at the time of cataloguing as containing organic material which may be subject to restrictions regarding import or export. The information is made available for the convenience of bidders and the absence of the symbol is not a warranty that there are no restrictions regarding import

or export of the Lot; bidders should refer to Condition 12 of the Conditions of Sale. Please also refer to the section on Endangered Species in the information on Buying at Auction.

▮ Monumental

Lots with this symbol may, in our opinion, require special handling or shipping services due to size or other physical considerations. Bidders are advised to inspect the lot and to contact Sotheby's prior to the sale to discuss any specific shipping requirements.

🕒 Premium Lot

In order to bid on "Premium Lots" (🕒 in print catalogue or 🕒 in eCatalogue) you must complete the required Premium Lot pre-registration application. You must arrange for Sotheby's to receive your pre-registration application at least three working days before the sale. Sotheby's may require such necessary financial references, guarantees, deposits and/or such other security in its absolute discretion as security for any client wishing to bid at auction. Please bear in mind that we are unable to obtain financial references over weekends or public holidays. Sotheby's decision whether to accept any pre-registration application shall be final. If your application is accepted you will be provided with a special paddle number. The Bidnow online bidding service is not available for Premium Lots.

2. BEFORE THE AUCTION

The Catalogue A catalogue prepared by Sotheby's is published for every scheduled live auction and is available prior to the sale date. The catalogue will help familiarize you with property being offered at the designated auction. Catalogues may be purchased at Sotheby's or by subscription in any categories. For information, please call +1 212 606 7000 or visit sothebys.com. Prospective bidders should also consult sothebys.com for the most up to date cataloguing of the property in this catalogue.

Estimates Each lot in the catalogue is given a low and high estimate, indicating to a prospective buyer a range in which the lot might sell at auction. When possible, the estimate is based on previous auction records of comparable pieces. The estimates are determined several months before a sale and are therefore subject to change upon further research of the property, or to reflect market conditions or currency fluctuations. Estimates should not be relied upon as a representation or prediction of actual selling prices.

Provenance In certain circumstances, Sotheby's may print in the catalogue the history of ownership of a work of art if such information contributes to scholarship or is otherwise well known and assists in distinguishing the work of art. However, the identity of the seller or previous owners may not be disclosed for a variety of reasons. For example, such information may be excluded to accommodate a seller's request for confidentiality or because the identity of prior owners is unknown given the age of the work of art.

Specialist Advice Prospective bidders may be interested in specific information not included in the catalogue description of a lot. For additional information, please contact either a Sotheby's specialist in charge of the sale (all of whom are listed in the front of the catalogue), or Sotheby's Client Services Department. You may also request a condition report from the specialist in charge.

The Exhibition An exhibition of the auction property will be held the week prior to the auction on the days listed in the front of the catalogue. There you will have the opportunity to view, inspect and evaluate the property yourself, or with the help of a Sotheby's specialist.

Salesroom Notices Salesroom notices amend the catalogue description of a lot after our catalogue has gone to press. They are posted in the viewing galleries and salesroom or are announced by the auctioneer. Please take note of them.

Registration Sotheby's may require such necessary financial references, guarantees, deposits and/or such other security, in its absolute discretion, as security for your bid. If you are not successful on any lot, Sotheby's will arrange for a refund (subject to any right of set off) of the deposit amount paid by you without interest within 14 working days of the date of the sale. Any exchange losses or fees associated with the refund shall be borne by you. Registration to bid on Premium Lots must be done at least 3 business days prior to the sale.

3. DURING THE AUCTION

The Auction Auctions are open to the public without any admission fee or obligation to bid. The auctioneer introduces the objects for sale — known as "lots" — in numerical order as listed in the catalogue. Unless otherwise noted in the catalogue or by an announcement at the auction, Sotheby's acts as agent on behalf of the seller and does not permit the seller to bid on his or her own property. It is important for all bidders to know that the auctioneer may open the bidding on any lot by placing a bid on behalf of the seller. The auctioneer may further bid on behalf of the seller, up to the amount of the reserve, by placing responsive or consecutive bids for a lot. The auctioneer will not place consecutive bids on behalf of the seller above the reserve.

Bidding in Person If you would like to bid, you must register for a paddle upon entering the salesroom. The paddle is numbered so as to identify you to the auctioneer. To register, you will need a form of identification such as a driver's license, a passport or some other type of government issued identification. If you are a first-time bidder, you will also be asked for your address, phone number and signature in order to create your account. If you are bidding for someone else, you will need to provide a letter from that person authorizing you to bid on that person's behalf. Issuance of a bid paddle is in Sotheby's sole discretion.

Once the first bid has been placed, the auctioneer asks for higher bids, in increments

determined by the auctioneer. To place your bid, simply raise your paddle until the auctioneer acknowledges you. You will know when your bid has been acknowledged; the auctioneer will not mistake a random gesture for a bid.

If you wish to register to bid on a Premium Lot, please see the paragraph above.

All lots sold will be invoiced to the name and address in which the paddle has been registered and cannot be transferred to other names and addresses. Sotheby's reserves the right to refuse to accept payment from a source other than the buyer of record.

Absentee Bidding If it is not possible for you to attend the auction in person, you may place your bid ahead of time. In the back of every catalogue there is an absentee bid form, which you can use to indicate the item you wish to bid on and the maximum bid you are willing to make. Return the completed absentee bid form to Sotheby's either by mail or fax. When the lot that you are interested in comes up for sale, a Sotheby's representative will execute the bid on your behalf, making every effort to purchase the item for as little as possible and never exceeding your limit. This service is free and confidential. For detailed instructions and information, please see the Absentee Bid Form and Guide for Absentee Bidders instructions at the back of this catalogue.

Telephone Bidding In some circumstances, we offer the ability to place bids by telephone live to a Sotheby's representative on the auction floor. Please contact the Bid Department prior to the sale to make arrangements or to answer any questions you may have. Telephone bids are accepted only at Sotheby's discretion and at the caller's risk. Calls may also be recorded at Sotheby's discretion. By bidding on the telephone, prospective buyers consent thereto.

Online Bidding If you cannot attend the auction, it may be possible to bid online via BIDnow, eBay, Invaluable or other Online Platforms for selected sales. This

service is free and confidential. For information about registering to bid via BIDnow, please see www.sothebys.com. For information about registering to bid on eBay, please see www.ebay.com/sothebys. For information about registering to bid on Invaluable, please see www.invaluable.com/invaluable/help.cfm. Bidders utilizing any online platform are subject to the Online Terms as well as the relevant Conditions of Sale. Online bidding may not be available for Premium Lots.

Employee Bidding Sotheby's employees may bid in a Sotheby's auction only if the employee does not know the reserve and if the employee fully complies with Sotheby's internal rules governing employee bidding.

US Economic Sanctions The United States maintains economic and trade sanctions against targeted foreign countries, groups and organizations. There may be restrictions on the import into the United States of certain items originating in sanctioned countries, including Burma, Cuba, Iran, North Korea and Sudan. The purchaser's inability to import any item into the US or any other country as a result of these or other restrictions shall not justify cancellation or rescission of the sale or any delay in payment. Please check with the specialist department if you are uncertain as to whether a lot is subject to these import restrictions, or any other restrictions on importation or exportation.

Hammer Price and the Buyer's Premium For lots which are sold, the last price for a lot as announced by the auctioneer is the hammer price. A buyer's premium will be added to the hammer price and is payable by the purchaser as part of the total purchase price. The buyer's premium will be the amount stated in the Conditions of Sale.

Currency Board As a courtesy to bidders, a currency board is operated in many salesrooms. It displays the lot number and current bid in both U.S. dollars and foreign currencies. Exchange rates are approximations based on recent exchange rate information

and should not be relied upon as a precise invoice amount. Sotheby's assumes no responsibility for any error or omission in foreign or United States currency amounts shown.

Results Successful absentee bidders will be notified after the sale. Absentee bidders will receive a list of sale results if they enclose a stamped self-addressed envelope with their absentee bid form. Printed lists of auction prices are available at our galleries approximately three weeks following each auction and are sent on request to catalogue purchasers and subscribers. Results may also be obtained online at sothebys.com.

International Auctions If you need assistance placing bids, obtaining condition reports or receiving auction results for a Sotheby's sale outside the United States, please contact our International Client Services Department.

4. AFTER THE AUCTION

Payment If your bid is successful, you can go directly to Post Sale Services to make payment arrangements. Otherwise, your invoice will be mailed to you. The final price is determined by adding the buyer's premium to the hammer price on a per-lot basis. Sales tax, where applicable, will be charged on the entire amount. Payment is due in full immediately after the sale. However, under certain circumstances, Sotheby's may, in its sole discretion, offer bidders an extended payment plan. Such a payment plan may provide an economic benefit to the bidder. Credit terms should be requested at least one business day before the sale. However, there is no assurance that an extended payment plan will be offered. Please contact Post Sale Services or the specialist in charge of the sale for information on credit arrangements for a particular lot. Please note that Sotheby's will not accept payments for purchased lots from any party other than the purchaser, unless otherwise agreed between the purchaser and Sotheby's prior to the sale.

Payment by Cash It is against Sotheby's general policy to accept single or multiple related payments in the form of cash or cash equivalents in excess of the local currency equivalent of US \$10,000. It is Sotheby's policy to request any new clients or purchasers preferring to make a cash payment to provide: verification of identity (by providing some form of government issued identification containing a photograph, such as a passport, identity card or driver's license), confirmation of permanent address and identification of the source of the funds.

Payment by Credit

Cards Sotheby's accepts payment by credit card for Visa, MasterCard, and American Express only. Credit card payments may not exceed \$50,000 per sale. Payment by credit card may be made (a) online at <https://www.sothebys.com/en/invoice-payment.html>, (b) by calling in to Post Sale Services at +1 212 606 7444, or (c) in person at Sotheby's premises at the address noted in the catalogue.

Payment by Check Sotheby's accepts personal, certified, banker's draft and cashier's checks drawn in US Dollars (made payable to Sotheby's). While personal and company checks are accepted, property will not be released until such checks have cleared, unless you have a pre-arranged check acceptance agreement. Application for check clearance can be made through the Post Sale Services.

Certified checks, banker's drafts and cashier's checks are accepted at Sotheby's discretion and provided they are issued by a reputable financial institution governed by anti-money laundering laws. Instruments not meeting these requirements will be treated as "cash equivalents" and subject to the constraints noted in the prior paragraph titled "Payment By Cash".

Payment by Wire Transfer To pay for a purchase by wire transfer, please refer to the payment instructions on the invoice provided by Sotheby's or contact Post Sale Services to request instructions.

Sales and Use Tax New York sales tax is charged on the hammer price, buyer's premium and any other applicable charges on any property picked up or delivered in New York State, regardless of the state or country in which the purchaser resides or does business. Purchasers who wish to use their own shipper who is not a considered a "common carrier" by the New York Department of Taxation and Finance will be charged New York sales tax on the entire charge regardless of the destination of the property. Please refer to "Information on Sales and Use Tax Related to Purchases at Auction" in the back of the catalogue.

Collection and Delivery

Post Sale Services
+ 1 212 606 7444
FAX: + 1 212 606 7043
uspostsaleservices@sothebys.com

Once your payment has been received and cleared, property may be released. Unless otherwise agreed by Sotheby's, all purchases must be removed by the 30th calendar day following a sale.

Shipping Services Sotheby's offers a comprehensive shipping service to meet all of your requirements. If you received a shipping quotation or have any questions about the services we offer please contact us.

Collecting your Property As a courtesy to purchasers who come to Sotheby's to collect property, Sotheby's will assist in the packing of lots, although Sotheby's may, in the case of fragile articles, choose not to pack or otherwise handle a purchase.

If you are using your own shipper to collect property from Sotheby's, please provide a letter of authorization and kindly instruct your shipper that they must provide a Bill of Lading prior to collection. Both documents must be sent to Post Sale Services prior to collection.

The Bill of Lading must include: the purchaser's full name, the full delivery address including the street name and number, city and state or city and country, the sale and lot number.

Sotheby's will contact your shipper within 24 hours of receipt of the Bill of Lading to confirm the date and time that your property can be collected. Property will not be released without this confirmation and your shipper must bring the same Bill of Lading that was faxed to Sotheby's when collecting. All property releases are subject to the receipt of cleared funds.

Please see the Conditions of Sale for further details.

Endangered Species Certain property sold at auction, for example, items made of or incorporating plant or animal materials such as coral, crocodile, ivory, whalebone, tortoiseshell, rhinoceros horn, rosewood, etc., irrespective of age or value, may require a license or certificate prior to exportation and additional licenses or certificates upon importation to another country. Sotheby's suggests that buyers check on their government wildlife import requirements prior to placing a bid. Please note that the ability to obtain an export license or certificate does not ensure the ability to obtain an import license or certificate in another country, and vice versa. It is the purchaser's responsibility to obtain any export or import licenses and/or certificates as well as any other required documentation. In the case of denial of any export or import license or of delay in the obtaining of such licenses, the purchaser is still responsible for making on-time payment of the total purchase price for the lot.

Although licenses can be obtained to export some types of endangered species, other types may not be exported at all, and other types may not be resold in the United States. Upon request, Sotheby's is willing to assist the purchaser in attempting to obtain the appropriate licenses and/or certificates. However, there is no assurance that an export license or certificate can be obtained. Please check with the specialist department or the Shipping Department if you are uncertain as to whether a lot is subject to these export/import license and certificate requirements, or any other restrictions on exportation.

The Art Loss Register As part of Sotheby's efforts to support only the legitimate art market and to combat the illegitimate market in stolen property, Sotheby's has retained the Art Loss Register to check all uniquely identifiable items offered for sale in this catalogue that are estimated at more than the equivalent of US\$1,500 against the Art Loss Register's computerized database of objects reported as stolen or lost. The Art Loss Register is pleased to provide purchasers with a certificate confirming that a search has been made. All inquiries regarding search certificates should be directed to The Art Loss Register, First Floor, 63-66 Hatten Garden, London EC1N 8LE or by email at artloss@artloss.com. The Art Loss Register does not guarantee the provenance or title of any catalogued item against which they search, and will not be liable for any direct or consequential losses of any nature howsoever arising. This statement and the ALR's service do not affect your rights and obligations under the Conditions of Sale applicable to the sale.

SELLING AT AUCTION

If you have property you wish to sell, Sotheby's team of specialists and client services representatives will assist you through the entire process. Simply contact the appropriate specialist (specialist departments are listed in the back of this catalogue), General Inquiries Department or a Sotheby's regional office representative for suggestions on how best to arrange for evaluation of your property.

Property Evaluation There are three general ways evaluation of property can be conducted:

(1) In our galleries

You may bring your property directly to our galleries where our specialists will give you auction estimates and advice. There is no charge for this service, but we request that you telephone ahead for an appointment. Inspection hours are 9:30 am to 5 pm, Monday through Friday.

(2) By photograph

If your property is not portable, or if you are not able to visit our galleries, you may bring in or send a clear photograph of each item. If you have a large collection, a representative selection of photographs will do. Please be sure to include the dimensions, artist's signature or maker's mark, medium, physical condition and any other relevant information. Our specialists will provide a free preliminary auction estimate subject to a final estimate upon first-hand inspection.

(3) In your home

Evaluations of property can also be made in your home. The fees for such visits are based on the scope and diversity of property, with travel expenses additional. These fees may be rebated if you consign your property for sale at Sotheby's. If there is considerable property in question, we can arrange for an informal "walkthrough."

Once your property has been evaluated, Sotheby's representatives can then help you determine how to proceed should you wish to continue with the auction process. They will provide information regarding sellers' commission rates and other charges, auction venue, shipping and any further services you may require.

SOTHEBY'S SERVICES

Sotheby's also offers a range of other services to our clients beyond buying and selling at auction. These services are summarized below. Further information on any of the services described below can be found at sothebys.com.

Valuations and Appraisals

Sotheby's Valuations and Appraisals Services offers advice regarding personal property assets to trusts, estates, and private clients in order to help fiduciaries, executors, advisors, and collectors meet their goals. We provide efficient and confidential advice and assistance for all appraisal and auction services. Sotheby's can prepare appraisals to suit a variety of needs, including estate tax and planning, insurance, charitable

contribution and collateral loan. Our appraisals are widely accepted by the Internal Revenue Service, tax and estate planning professionals, and insurance firms. In the event that a sale is considered, we are pleased to provide auction estimates, sales proposals and marketing plans. When sales are underway, the group works closely with the appropriate specialist departments to ensure that clients' needs are met promptly and efficiently.

Financial Services Sotheby's offers a wide range of financial services including advances on consignments, as well as loans secured by art collections not intended for sale.

Museum Services Tailored to meet the unique needs of museums and nonprofits in the marketplace, Museum Services offers personal, professional assistance and advice in areas including appraisals, deaccessions, acquisitions and special events.

Corporate Art Services Devoted to servicing corporations, Sotheby's Corporate Art Services Department can prepare appraisal reports, advise on acquisitions and deaccessions, manage all aspects of consignment, assist in developing arts-management strategies and create events catering to a corporation's needs.

INFORMATION ON SALES AND USE TAX RELATED TO PURCHASES AT AUCTION

To better assist our clients, we have prepared the following information on Sales and Use Tax related to property purchased at auction.

Why Sotheby's Collects Sales

Tax Virtually all State Sales Tax Laws require a corporation to register with the State's Tax Authorities and collect and remit sales tax if the corporation maintains a presence within the state, such as offices. In the states that impose sales tax, Tax Laws require an auction house, with a presence in the state, to register as a sales tax collector, and remit sales tax collected to the state. New York sales tax is charged on the hammer price, buyer's premium

and any other applicable charges on any property picked up or delivered in New York, regardless of the state or country in which the purchaser resides or does business.

Where Sotheby's Collects

Sales Tax Sotheby's is currently registered to collect sales tax in the following states: California, Colorado, Connecticut, Florida, Illinois, Maryland, Massachusetts, Minnesota, Missouri, New Jersey, New York, Ohio, Pennsylvania, Texas and Washington. For any property collected or received by the purchaser in New York City, such property is subject to sales tax at the existing New York State and City rate of 8.875%.

Sotheby's Arranged Shipping

If the property is delivered into any state in which Sotheby's is registered, Sotheby's is required by law to collect and remit the appropriate sales tax in effect in the state where the property is delivered.

Client Arranged Shipping

Property collected from Sotheby's New York premises by a common carrier hired by the purchaser for delivery at an address outside of New York is not subject to New York Sales Tax, but if the property is delivered into any state in which Sotheby's is registered, Sotheby's is required by law to collect and remit the appropriate sales tax in effect in the state where the property is delivered. New York State recognizes shippers such as the United States Postal Service, United Parcel Service, FedEx, or the like as "common carriers". If a purchaser hires a shipper other than a common carrier to pick up property, Sotheby's will collect New York sales tax at a rate of 8.875% regardless of the ultimate destination of the goods. If a purchaser utilizes a freight-forwarder who is registered with the Transportation Security Administration ("TSA") to deliver property outside of the United States, no sales tax would be due on this transaction.

Where Sotheby's is Not Required to Collect Sales Tax

Sotheby's is not required to collect sales tax on property delivered to states other than those listed above. If the property is delivered to

a state where Sotheby's is not required to collect sales tax, it is the responsibility of the purchaser to self-assess any sales or use tax and remit it to taxing authorities in that state.

Sotheby's is not required to collect sales tax for property delivered to the purchaser outside of the United States.

Restoration and Other Services

Regardless of where the property is subsequently transported, if any framing or restoration services are performed on the property in New York, it is considered to be a delivery of the property to the purchaser in New York, and Sotheby's will be required to collect the 8.875% New York sales tax.

Certain Exemptions

Most states that impose sales taxes allow for specified exemptions to the tax. For example, a registered re-seller such as a registered art dealer may purchase without incurring a tax liability, and Sotheby's is not required to collect sales tax from such re-seller. The art dealer, when re-selling the property, may be required to charge sales tax to its client, or the client may be required to self-assess sales or use tax upon acquiring the property.

Local Tax Advisors As sales tax laws vary from state to state, Sotheby's recommends that clients with questions regarding the application of sales or use taxes to property purchased at auction seek tax advice from their local tax advisors.

IMPORTANT NOTICES

Regarding Jewelry Statements in the catalogue regarding the condition of lots in this sale usually appear in the description. However, the absence of any such reference does not imply that a lot is in perfect condition or completely free from wear or imperfections. Sotheby's will be pleased to offer condition reports of the lots to potential purchasers. Please call the jewelry representatives as set forth in the front of the catalogue.

Any gemological terms used in the catalogue have the same meanings as set forth in the Federal

Trade Commission's guides for the jewelry, precious metals and pewter industries. A copy of these guidelines is available from Sotheby's upon request.

Regarding Diamonds Sotheby's shares the concerns expressed by the United Nations Security Council with respect to uncut diamonds potentially coming from Angola and Sierra Leone. We will comply fully with any obligations imposed in connection with the Security Council's resolutions regarding these matters.

Treatment and Condition of Gemstones Traditionally, gemstones have been treated by a variety of techniques to enhance color and generally to improve their appearance. Typically, rubies and sapphires have been heat treated and emeralds have been treated by oil or resin to improve color and clarity. These or other techniques, such as dyeing, irradiation, coating and impregnation, may be used on other gemstones.

Although it is widely believed that heat treatments are permanent, purchasers should assume that any treatment may not be permanent in nature and that over time special care of the stone may be required. Prospective purchasers are reminded that, unless the catalogue description specifically states that a stone is natural, we have assumed that some form of treatment may have been used and that such treatment may not be permanent. Our presale estimates reflect this assumption.

To the extent that Sotheby's has laboratory reports containing specific information on the treatment of a stone, these reports are made available for review by potential purchasers. Available reports from internationally recognized gemological laboratories will be noted in the description of the item. New forms of treatments and new scientific methods to discern them are constantly being developed. Consequently, there may be a lack of consensus among laboratories as to whether gemstones have been treated, the extent of the treatment or the permanence of the treatment.

References in the catalogue descriptions to certificates or reports issued by gemological laboratories are included only for the information of bidders and Sotheby's accepts no responsibility for the accuracy, terms or information contained in such certificates or reports.

Statements in the catalogue regarding the condition of lots in this sale usually appear in the description. However, the absence of any such reference does not imply that a lot is in perfect condition or completely free from wear or imperfections. Sotheby's will be pleased to offer condition reports on all lots of the sale to potential purchasers. Please call the jewelry representatives set forth in the front of the catalogue.

Gemological Certificates and Reports References in the catalogue descriptions to certificates or reports issued by gemological laboratories are provided only for the information of bidders, and Sotheby's does not guarantee and accepts no responsibility for the accuracy, terms or information contained in such certificates or reports. Please also note that laboratories may differ in their assessment of a gemstone (including its origin and presence, type and extent of treatments) and their certificates or reports may contain different results.

Certificates of Authenticity Various manufacturers may not issue certificates of authenticity upon request. Except as specifically noted in the catalogue, Sotheby's will not be required to furnish the purchaser with a certificate of authenticity from the manufacturer at any time. Unless the requirements for a rescission of the sale under the Terms of Guarantee are satisfied, the failure of a manufacturer to issue a certificate will not constitute grounds to rescind the sale.

Country of Origin While Sotheby's attempts to obtain accurate information on the country of origin of the gemstones, in accordance with paragraph 1 of the Conditions of Sale, Sotheby's does not guarantee the correctness of the catalogue or other description of the gemstones including the country of origin.

Regarding Gemstones Originating in Burma (Myanmar) Jadeite and rubies of Burmese origin and articles of jewellery less than 100 years old containing such gemstones may not be imported into the U.S. Buyers wishing to import non-Burmese rubies or jadeite into the U.S. must obtain certification of non-Burmese origin from a gemological laboratory. There may be costs and delays associated with this process.

With respect to items containing any other types of gemstones originating in Burma (e.g. sapphires), such items may be imported into the U.S. provided that the gemstones were mounted or incorporated into articles of jewellery outside of Burma as long as the setting is not of a temporary nature. Loose gemstones of any type originating in Burma may not be imported into the U.S.

The purchaser's inability to import any item into the U.S. or any other country as a result of these or other restrictions shall not justify cancellation or rescission of the sale or any delay in payment. Please check with the specialist department if you are uncertain as to whether a lot is subject to these import restrictions, or any other restrictions on importation or exportation.

Stone Weights Weights of stones printed in the catalogue and preceded by the words "stated to be," "about" or "approximately" are not guaranteed by Sotheby's. Prospective buyers are reminded that all lots are sold as shown.

Regarding Condition of Watches Prospective buyers should satisfy themselves by personal inspection as to the condition of each lot. If the prospective buyer is not able to inspect the piece, as a courtesy to our clients, we are pleased to provide an opinion of the condition of the property on request. However, since we are not professional watch restorers, any statement of opinion listed is purely subjective and is not a statement of fact. Condition reports may not specify all mechanical replacements or imperfections to the movement, case, dial, pendulum, separate base(s) or dome or any other replacements or additions to the lot. The absence of a condition report or the absence of a reference to damage in the catalogue does

not imply that the lot is in good condition, working order or free from restoration or repair. Watches in water-resistant cases have no warranties that are made that the watches are currently water-resistant. Please note that we do not guarantee the authenticity of any individual component parts, such as wheels, hands, crowns, crystals, screws, bracelets and leather bands, since subsequent repairs and restoration work may have resulted in the replacement of original parts.

In addition, certain manufacturers will not service or repair pieces if all of the component parts are not original to the piece. The refusal of a manufacturer to service or repair a piece on this basis does not constitute grounds to rescind the sale under the Terms of Guarantee. Furthermore, in reference to bands, we do not guarantee the material of manufacture. Please be advised that the purchaser will be responsible for complying with any applicable export and import matters, particularly in relation to endangered species and the United States Department of Fish and Wildlife Services.

Payments and Pick-Up All payments to be made at Client Accounting, 1334 York Avenue. See below for dates and times.

Pick-Up: From the Jewelry Department, 6th Floor, 1334 York Avenue.

The schedule for property pick-up will be as follows:

Thursday, 7 December
10:00 am - 5:00 pm
Friday, 8 December
10:00 am - 5:00 pm
Monday, 11 December
10:00 am - 5:00 pm
Tuesday, 12 December
10:00 am - 5:00 pm
Wednesday, 13 December
10:00 am - 5:00 pm

Decorative Photography
SquareMoose
New York
+1 212 643 2505

Photography
Pauline Shapiro
Ellen Warfield

RING SIZES

Metric	French/Japanese	English	American
37.8252	-	A	1/2
38.4237	-	A1/2	3/4
39.0222	-	B	1
39.6207	-	B1/2	11/4
40.2192	-	C	11/2
40.8177	-	C1/2	13/4
41.4162	1	D	2
42.0147	2	D1/2	21/4
42.6132	-	E	21/2
43.2117	3	E1/2	23/4
43.8102	4	F	3
44.4087	-	F1/2	33/4
45.0072	5	G	31/4
45.6057	-	G1/2	31/2
46.2042	6	H	33/4
46.8027	-	H1/2	4
47.4012	7	I	41/4
47.9997	8	I1/2	41/2
48.5982	-	J	43/4
49.1967	9	J1/2	5
49.7952	10	K	51/4
50.3937	-	K1/2	51/2
50.9922	11	L	53/4
51.5907	-	L1/2	6
52.1892	12	M	61/4
52.7877	13	M1/2	61/2
53.4660	-	N	63/4
54.1044	14	N1/2	7
54.7428	15	O	7
55.3812	-	O1/2	71/4
56.0196	16	P	71/2
56.6580	-	P1/2	73/4
57.2964	17	Q	8

DIAMOND CLARITY GRADING

Clarity grading relates to the impurities in a diamond. All clarity grading is carried out under a 10x magnification. The more impurities in a diamond the lower the price per carat.

FL	Flawless	No blemishes or inclusions
IF	Internally Flawless	No inclusions and only insignificant blemishes.
VVS1 & VVS2	Very Very Slightly Included	Extremely difficult to see, visible only from the back of the stone, or small and shallow enough to be removed easily by repolishing. In VVS2, inclusions are still very difficult to see.
VS1 & VS2	Very Slightly Included	Still difficult to see with the untrained eye.
SI1 & SI2	Slightly Included	Easy (SI1) or very easy (SI2) to see with a 10x lens. When these have been located with a 10x lens, look at the stone with the naked eye and the inclusions can sometimes be spotted
I1, I2 & I3	Imperfect	May be eye-visible face up without the aid of a lens. In I3, they may threaten the stones durability.

DIAMOND COLOR GRADING

GIA	
D	The top color grades, D, E, F, for a diamond is when it looks colorless against a white background.
E	
F	
G	In near colorless diamonds, G, H, I, there is a slight trace of color which will not be apparent to the untrained eye. Stones 0.50Ct or less will look colorless.
H	
I	
J	Diamonds graded J, K, L, will have notable traces of color. Small stones in this range will 'face up' colorless when mounted but larger stones will be tinted.
K	
L	
M	Diamonds graded M-Z will display a yellowish tint even to the untrained eye.
↓	
Z	
Z+	Z+ color grade indicates that the diamond is of fancy color and therefore fall into a different price bracket.

GLOSSARY OF TERMS

The following are examples of the terminology used in this catalogue. Please note that all statements made in this catalogue are made subject to the provisions of the Conditions of Sale and Terms of Guarantee printed in this catalogue:

SIGNATURES

BOLD TYPE HEADING

When the maker's name appears in Bold Type Heading in the catalogue description, in Sotheby's opinion, the piece is by the named jeweler.

NAME OF JEWELER

When we state the name of a maker in the catalogue description below the Bold Type Heading, we mean that, in Sotheby's opinion, although unsigned, the piece is by the named jeweler.

MOUNTING BY

When we state in the catalogue description below the Bold Type Heading "Mounting by _____"; we mean that, in Sotheby's opinion, the mounting is by the jeweler, and the gemstones were not supplied by the jeweler or the piece has been altered in some way after its manufacture.

INDEX OF DIAMONDS

COLOR	CLARITY	CARAT WEIGHT	SHAPE	LOT
D	VS2	3.79	Heart	434
E	VS1	3.13	Round	451
F	VS2	3.13	Old European	368
F / F	VVS2 / VS1	3.00 / 3.09	Emerald Cut	572
G	VS2	4.00	Round	454
G	VS2	3.55	Round	477
G	SI2	6.65	Pear	401
I	VS1	5.69	Emerald Cut	608
I	VS1	4.95	Marquise	521
J	SI1	3.39	Old European	532
K	VS2	4.41	Round	583
L	VVS2	12.92	Round	413
L	I1	3.03	Round	357
M / Q-R	VS2 / VS2	8.64 / 7.08	Round	437
N	VS2	6.95	Emerald Cut	589
Fancy Deep Pink	I1	1.05	Emerald Cut	517
Fancy Intense Yellow	VVS1	3.24	Cut-Cornered Square Modified Brilliant	385
Fancy Intense Yellow	VS2	3.54	Cushion	403
Fancy Intense Yellow / Fancy Yellow / Fancy Yellow	VS1 / VVS2 / VS1	4.13 / 4.37 / 3.83	Emerald Cut	575

COLORED STONE LIST

RUBY					
LOT	SHAPE	CARAT WEIGHT	ORIGIN	TREATMENT	LAB
503	Cushion	5.70	Burma	No Heat; Minor Oil	AGL
470	Cushion	6.06, 6.05	Thai	Heat	AGL
480	Oval	3.46	Thai	Heat	SSEF

EMERALD					
LOT	SHAPE	CARAT WEIGHT	ORIGIN	TREATMENT	LAB
411	Oval	Approx. 1.95	Colombia	None	AGL
372	Step	Approx. 2.55	Colombia	Insignificant to Minor	AGL
423	Pear	Approx. 8.90, 8.95	Colombia	Minor	AGL
424	Step	Approx. 6.40	Colombia	Minor	AGL
541	Oval	Approx. 14.50	Colombia	Minor	AGL
586	Emerald	9.58	Colombia	Minor	AGL

SAPPHIRE					
LOT	SHAPE	CARAT WEIGHT	ORIGIN	TREATMENT	LAB
418	Cushion	4.41	Burma	No Heat	AGL
450	Oval	13.31	Burma	No Heat	AGL
426	Step	8.74	Ceylon	No Heat	AGL
545	Cushion	25.53	Ceylon	No Heat	AGL
547	Oval	Approx. 9.40	Ceylon	No Heat	AGL
453	Pink Oval	3.36, 3.27	Madagascar	Heat	GIA
464	Pink Oval	5.05, 5.12	Madagascar	Heat	AGL

GUIDE FOR ABSENTEE AND TELEPHONE BIDDERS

If you are unable to attend an auction in person, you may give Sotheby's Bid Department instructions to bid on your behalf by completing the form overleaf. This service is confidential and available at no additional charge.

General

This service is free and confidential.

Please record accurately the lot numbers, descriptions and the top hammer price you are willing to pay for each lot.

We will try to purchase the lot(s) of your choice for the lowest price possible and never for more than the maximum bid amount you indicate.

"Buy" or unlimited bids will not be accepted.

Alternative bids can be placed by using the word "OR" between lot numbers. Then if your bid on an early lot is successful, we will not continue to bid on other lots for you. Or, if your early bids are unsuccessful, we will continue to execute bids for alternative lots until a bid is successful.

Bids must be placed in the same order as in the catalogue.

The form should be used for one sale only – please indicate the sale number, title and date on the form.

Please place your bids as early as possible, as in the event of identical bids the earliest received will take precedence. Wherever possible bids should be submitted at least twenty-four hours before the auction.

Where appropriate, your bids will be rounded down to the nearest amount consistent with the auctioneer's bidding increments.

Absentee bids, when placed by telephone, are accepted only at the caller's risk and must be confirmed by letter or fax to the Bid Department on +1 212 606 7016.

Please note that the execution of written bids is offered as an additional service for no extra charge at the bidder's risk and is undertaken subject to Sotheby's other commitments at the time of the auction; Sotheby's therefore cannot accept liability for error or failure to place such bids, whether through negligence or otherwise.

Successful bidders will receive an invoice detailing their purchases and giving instructions for payment and clearance of goods. Unsuccessful bidders will be advised.

Please note Sotheby's reserves the right to refuse to accept payment from a source other than the buyer of record.

All bids are subject to the conditions of sale and terms of guarantee applicable to the sale printed in the sale catalogue. Buyer's premium in the amount stated in paragraph 3 of the Conditions of Sale in the back of the sale catalogue will be added to the hammer price as part of the total purchase price, plus any applicable sales tax.

In the event that you are successful, payment is due immediately after the sale unless otherwise agreed in advance. Payment may be made by bank transfer, credit card (which may be subject to a convenience fee), check or cash (up to US\$10,000). You will be sent full details on how to pay with your invoice. It is against Sotheby's general policy to accept single or multiple related payments in the form of cash or cash equivalents in excess of US\$10,000.

It is Sotheby's policy to request any new clients or purchasers preferring to make a cash payment to provide: proof of identity (by providing some form of government issued identification containing a photograph, such as a passport, identity card or driver's license) and confirmation of permanent address.

We reserve the right to seek identification of the source of funds received.

Data Protection

Sotheby's will use information provided by its clients (or which Sotheby's otherwise obtains from eBay or other sources relating to its clients) for the provision of auction and other art-related services, loan services, client administration, marketing and otherwise to manage and operate its business, or as required by law, in accordance with Sotheby's Privacy Policy. This will include information such as the client's name and contact details, proof of identity, financial information, records of the client's transactions, and preferences. Some gathering of information about Sotheby's clients will take place using technical means to identify their preferences in order to provide a higher quality of service to them. Sotheby's may also disclose the client information to other Sotheby's Companies and/or third parties acting on their behalf to provide services

for these purposes.

Sometimes, Sotheby's may also disclose this information to carefully selected third parties for their own marketing purposes. If you do not wish your details to be used for this purpose, please email enquiries@sothebys.com.

If the client provides Sotheby's with information that is defined by European data protection laws as "sensitive", the client agrees that it may be used for the purposes set out above.

In the course of these disclosures, personal data collected in the European Economic Area may be disclosed to countries outside the European Economic Area. Although such countries may not have legislation that protects a client's personal information, Sotheby's shall take great care to keep such information secure and in accordance with European data protection principles. By agreeing to these Conditions of Business, the client is agreeing to such disclosure.

Please be aware that Sotheby's may film auctions or other activities on Sotheby's premises and that such recordings may be transmitted over the Internet via Sotheby's website, the eBay website and other Online Platforms. Telephone bids may be recorded.

Under European data protection laws, a client may object, by request and free of charge, to the processing of their information for certain purposes, including direct marketing, and may access and rectify personal data relating to them and may obtain more information about Sotheby's data protection policies by writing to Sotheby's, 34-35 New Bond Street, London W1A 2AA, or 1334 York Avenue, New York, NY 10021. Attn: Compliance, or emailing enquiries@sothebys.com. Sotheby's use of information collected about eBay users may differ and is governed by the terms of the eBay Privacy Policy and Sotheby's on eBay Live Auction Platform Privacy Policy, which can be found on the Sotheby's on eBay Live Auction Website.

Important

Please note that the execution of written and telephone bids is offered as an additional service for no extra charge, and at the bidder's risk. It is undertaken subject to Sotheby's other commitments at the time of the auction. Sotheby's therefore cannot accept liability for failure to place such bids, whether through negligence or otherwise. All bids will be executed and are accepted subject to the "Conditions of Sale" and "Terms of Guarantee" printed in the catalogue for the sale. Please note that a buyer's premium in the amount stated in paragraph 3 of the "Conditions of Sale" in the back of the sale catalogue will be added to the hammer price as part of the total purchase price, plus any applicable sales tax.

New Clients

Please note that we may contact you to request a bank reference. In addition Sotheby's requires a copy of government issued photo ID in order to generate a new account. If you have opened a new account with Sotheby's since 1 December, 2002, and have not already done so, you will be asked to present appropriate documentation confirming your identity before your lots or sale proceeds can be released to you.

For Written/Fixed Bids

- Bids will be executed for the lowest price as is permitted by other bids or reserves.
- "Buy" or unlimited bids will not be accepted and we do not accept "plus one" bids. Please place bids in the same order as in the catalogue.
- Always indicate a "top limit" — the amount up to which you would bid if you were attending the auction yourself.
- Alternative bids can be placed by using the word "or" between lot numbers.
- Where appropriate your written bids will be rounded down to the nearest amount consistent with the auctioneer's bidding increments.

For Telephone Bids

Please clearly specify the telephone number on which you may be reached at the time of the sale, including the country code. We will call you from the saleroom shortly before your lot is offered.

INTERNATIONAL DEPARTMENTS

For a full listing of our offices and salerooms worldwide with detailed information on all of Sotheby's services, visit sothebys.com

David Bennett
Chairman,
International Jewelry Division

Gary Schuler
Chairman,
North and South America

Daniela Mascetti
Senior Specialist,
International
Worldwide Head of Scholarship

Brett O'Connor
Senior Specialist,
International

Patti Wong
Chairman, Asia
Chairman, Sotheby's Diamonds

Quek Chin Yeow
Chairman, Asia

Maarten ten Holder
Global Managing Director
Luxury & Lifestyle Division

Maria Kelly
Deputy Managing Director,
Luxury & Lifestyle Division

Andres White Correal
Director of International Business
Development

Esther Tadjiev
Director of International
Sales Development

Julia Castelli
Sales Director,
Europe

Yang Bu
Business Director,
North America

Emma Paleschi
Head of Jewelry Business,
Europe

Rebecca Spencer
Business Director,
Geneva

Scott Roworth
Business Director, Asia

NORTH AMERICA

NEW YORK

Gary Schuler
Carol Elkins
Frank Everett
Catharine Becket
Esther Tadjiev
Robin Wright
Alexander Eblen
Quig Bruning
Kendall Reed
Nikita Manilal
+1 212 606 7392

Sotheby's Diamonds
Natasha Mahdavi
+1 212 894 1400

WEST

Carol Elkins
+1 415 772 9027
Quig Bruning
+1 917 497 1058
Yvonne Teng
+1 310 786 1864

EUROPE

GENEVA

David Bennett
Daniela Mascetti
Brett O'Connor
Olivier Wagner

Nicholas Rayner ‡
Senior Consultant, Europe

Prince Abdul'Aziz Toussoun ‡
Associate, Europe
+41 22 908 48 49

LONDON

Kristian Spofforth
Justin Roberts
Andres White Correal
Benoit Repellin
Julia Castelli
+44 20 7293 6409

MILAN

Sara Miconi
+39 02 295 00201
Daniela Mascetti
+41 22 908 48 49

PARIS

Gabriella Mantegani
Claire de Truchis-Lauriston
+33 1 5305 5337

AMSTERDAM

Albertine Verlinde
+31 20 550 2204

BRUSSELS

Marianna Lora
+32 2 648 0080

LUGANO

Iris Fabbri
+41 91 993 30 60

MADRID

Andres White Correal
+34 91 576 5714

MONACO

Douglas Walker
+377 93 30 8880

MUNICH

Heinrich Graf von Spreiti
+49 89 2909 5121

ROME

Luisa Lepri
+39 06 699 41791

TEL AVIV

Sigal Mordechai
+972 3 560 1666

DUBAI

Katia Nounou
Noha Hussein
+44 78 4036 7595

VIENNA

Andrea Jungmann
+43 1 512 4772

ASIA

HONG KONG

Quek Chin Yeow
Flora Wong
Shanne Ng
Yvonne Chu
Julia Liu
Jessica Wyndham
+852 2822 8112

Sotheby's Diamonds
Lisa Chow
Joanne Ma
+852 2822 8113

CHINA

BEIJING

Lei Tang
+86 10 6408 8890

SHANGHAI

Fiona Zhang
+86 21 6288 7500

INDONESIA

Jasmine Prasetyo
+62 21 5797 3603

JAPAN

Aki Uemura
Maiko Ichikawa
+81 3 3230 2755

MALAYSIA

Walter Cheah ‡
+60 12 208 3917

PHILIPPINES

Angela Hsu
+63 917 815 0075

SINGAPORE

Esther Seet
+65 6732 8239

TAIWAN

Wendy Lin
Nicolette Chou
+886 2 2757 6689

THAILAND

Wannida Saetio
+66 2 286 0788

Consultant ‡

INDEX OF MAKERS

Maker	Lot	Maker	Lot
Aletto Brothers	406, 412	Marcus & Co.	388, 536
Angela Cummings for Tiffany & Co.	590	Marina B	468
Anna Hu	428	Marina B.	469
Asprey	359	Michele della Valle	429
Asprey & Co.	572	Mounted by Cartier	413
Audemars Piguet	456	Moussaieff	551
Belperron	331	Omega	338
Boucheron	510	Oscar Heyman & Brothers	435, 436, 486, 565, 566, 582,
Buccellati	345, 492		596
Bulgari	409, 432, 466, 487, 497, 500, 558, 588	Paolo Costagli	439, 443
Cartier	377, 381, 448, 504, 506, 509, 523, 555	Pasquale Bruni	339
Chaumet	420, 421	Piaget	573
David Webb	346, 347, 350, 398, 399, 402, 404, 407, 475, 476, 578, 587, 595, 600, 602, 603, 604, 605, 606, 607	Piranesi	380
Elizabeth Gage	411	Ruser	386
Fred	514	Schlumberger for Tiffany & Co.	351, 354, 480, 511, 512, 513, 515
Lucien Gautrait	490	Seaman Schepps	349, 356, 474, 499, 553
Giovane	581	Sifen Chang	598
Graff	433	T. B. Starr	537
Gucci	496	Tiffany & Co.	325, 336, 352, 371, 373, 403, 444, 446, 481, 491, 528, 567, 568, 597
Harry Winston	519, 610, 611	Tiffany & Co. Schlumberger Studios	516, 561, 562, 563, 564
Judith Ripka	414, 554, 585	Tiffany & Co., Designed by Louis Comfort Tiffany	367
Julius Cohen	574	Tiffany & Co., Schlumberger Studios	462
Krypell	335	Tony Duquette	353, 360, 557, 594, 599, 601, 612
Kurt Wayne	400	Valentin Magro	410, 560, 577
Kutchinsky	479	Van Cleef & Arpels	342, 405, 408, 460, 461, 465, 472, 473, 478, 482, 495, 580, 613, 614
		Verdura	318, 328, 329, 330, 332, 333, 341, 343, 501
		Zolotas	559

BOARD OF DIRECTORS

Domenico De Sole

Chairman of the Board

The Duke of Devonshire

Deputy Chairman of the Board

Tad Smith

**President and
Chief Executive Officer**

Jessica Bibliowicz

Linus W. L. Cheung

Kevin Conroy

Daniel S. Loeb

Olivier Reza

Marsha E. Simms

Diana L. Taylor

Dennis M. Weibling

Harry J. Wilson

**SOTHEBY'S
EXECUTIVE MANAGEMENT**

Jill Bright

**Human Resources
& Administration
Worldwide**

Amy Cappellazzo

**Chairman
Fine Art Division**

Valentino D. Carlotti
**Business Development
Worldwide**

Kevin Ching
**Chief Executive Officer
Asia**

Adam Chinn
**Chief Operating Officer
Worldwide**

Lauren Gioia
**Communications
Worldwide**

David Goodman
**Digital Development
& Marketing
Worldwide**

Mike Goss
Chief Financial Officer

Scott Henry
**Technology & Operations
Worldwide**

Jane Levine
**Chief Compliance Counsel
Worldwide**

Jonathan Olsoff
**General Counsel
Worldwide**

Jan Prasens
**Managing Director
Europe, Middle East, Russia,
India and Africa**

Allan Schwartzman
**Chairman
Fine Art Division**

Maarten ten Holder
**Global Managing Director
Luxury & Lifestyle Division**

**SOTHEBY'S INTERNATIONAL
COUNCIL**

Robin Woodhead

**Chairman
Sotheby's International**

John Marion

Honorary Chairman

Juan Abelló

Judy Hart Angelo
Anna Catharina Astrup

Nicolas Berggruen

Philippe Bertherat

Lavinia Borromeo

Dr. Alice Y.T. Cheng

Laura M. Cha

Halit Cingillioğlu

Jasper Conran

Henry Cornell

Quinten Dreesmann

Ulla Dreyfus-Best

Jean Marc Etlin

Tania Fares

Comte Serge de Ganay

Ann Getty

Yassmin Ghandehari

Charles de Gunzburg

Ronnie F. Heyman

Shalini Hinduja

Pansy Ho

HH Prince Aamyn Aga Khan

Catherine Lagrange

Edward Lee

Jean-Claude Marian

Batia Ofer

Georg von Opel

Marchesa Laudomia Pucci
Castellano

David Ross

Rolf Sachs

René H. Scharf

Biggi Schuler-Voith

Judith Taubman

Olivier Widmaier Picasso

The Hon. Hilary M. Weston,

CM, CVO, OOnt

**CHAIRMAN'S OFFICE
COUNCIL****AMERICAS**

Lisa Dennison

Benjamin Doller

Andrea Fiuczynski

George Wachter

Lulu Creel

EUROPE

Oliver Barker

Helena Newman

Mario Tavella

Dr. Philipp Herzog
von Württemberg

David Bennett

Lord Dalmeny

Claudia Dwek

Edward Gibbs

Caroline Lang

Lord Poltimore

ASIA

Patti Wong

Richard C. Buckley

Nicolas Chow

Quek Chin Yeow



Sotheby's EST. 1744
Collectors gather here.